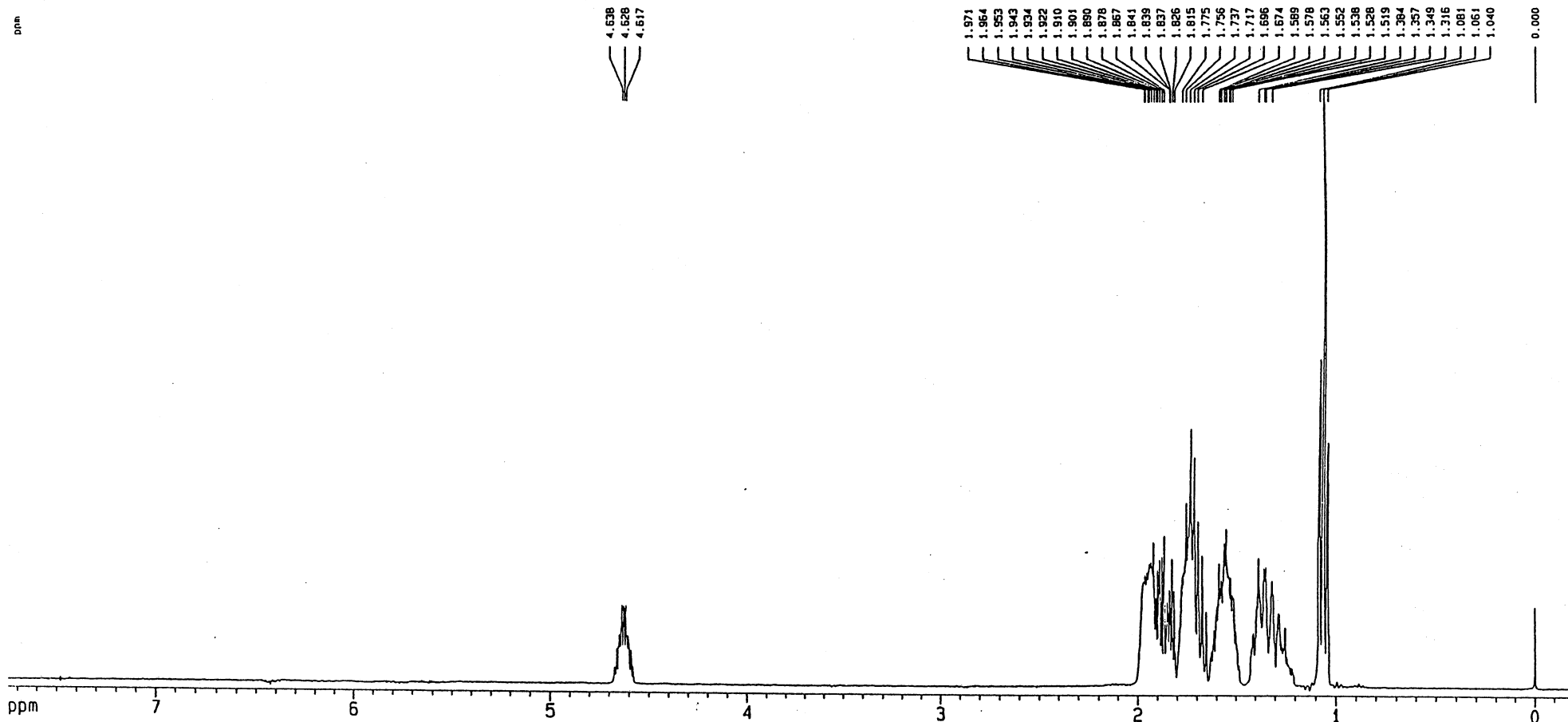


1-3-197

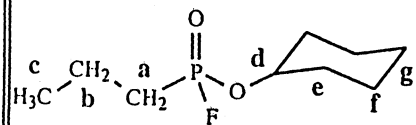


CYCLOHEXYL PROPYLPHOSPHONOFUORIDATE

CAS number : [28364-21-8]
 MF : C₉H₁₈O₂FP
 Solvent/Lock : CDCl₃/CDCl₃
 Nucleus : ¹H
 Apparatus : Bruker AMX360
 Frequency : 360.13 MHz
 Temperature : 23°C
 Concentration : ≈ 40 mg/ml

Reference : TMS internal
 Spectral width : 3000 Hz
 Pulse Width : 9.5 μs (90°)
 Repetition Time : 4 s
 Data points : FID = 16K, SPC = 32K
 Line Broadning : No

a : δ = 1.83 ppm ; J_{P-a} = 19.3 Hz ; J_{F-a} = 4.2 Hz
 b : δ = 1.66 ppm ; J_{P-b} = ; J_{a-b} = 7.7 Hz
 c : δ = 1.03 ppm ; J_{b-c} = 7.4 Hz
 d : δ = 4.60 ppm ; J_{P-d} = 7.4 Hz
 e, f, g : δ = 2.0-1.3 ppm



OPCW Code:1-3-197 (p1/1)