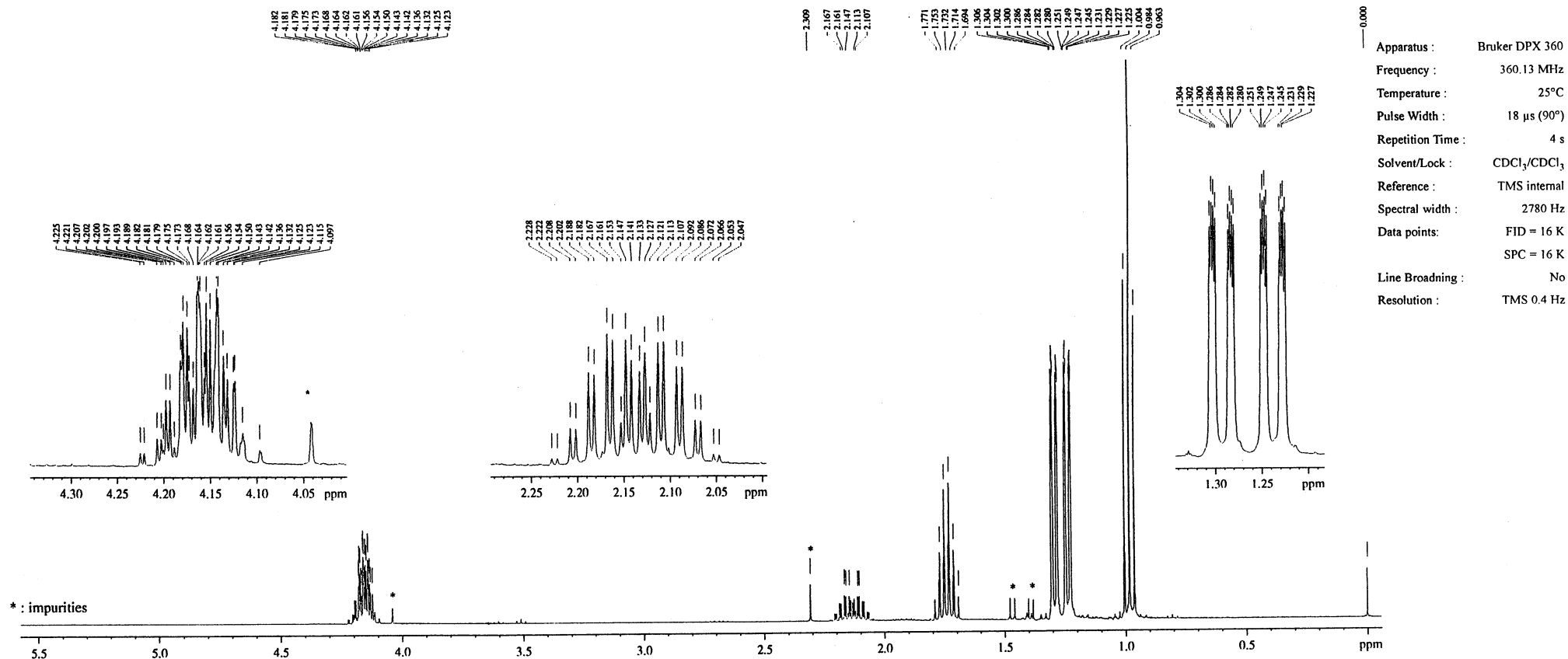
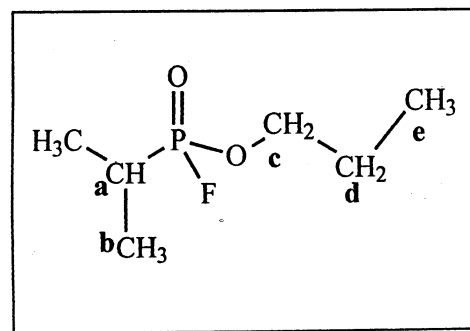


^1H

1-3-268



n-PROPYL ISOPROPYLPHOSPHONOFUORIDATE

MF : $\text{C}_6\text{H}_{14}\text{FO}_2\text{P}$ CAS :

ASSIGNMENT

- a : $\delta = 2.14$ ppm ; $J_{\text{F-a}} = 2.2$ Hz ; $J_{\text{P-a}} = 19.8$ Hz ; $J_{\text{a-b}} = 7.2$ Hz
 b : $\delta = 1.27$ & 1.26 ppm ; $J_{\text{P-b}} = 19.8$ Hz ; $J_{\text{F-b}} = 1.4$ Hz
 c : $\delta = 4.17$ & 4.15 ppm ; $J_{\text{P-c}} = 8.9$ & 7.7 Hz ;
 $J_{\text{F-c}} = 1.6$ & 0.5 Hz ; $J_{\text{C-d}} = 6.6$ Hz ; $J_{\text{C-c}} = 10.1$ Hz
 d : $\delta = 1.74$ ppm ; $J_{\text{d-e}} = 7.4$ Hz
 e : $\delta = 0.98$ ppm

OPCW Code: 1-3-268 (P.1/1)