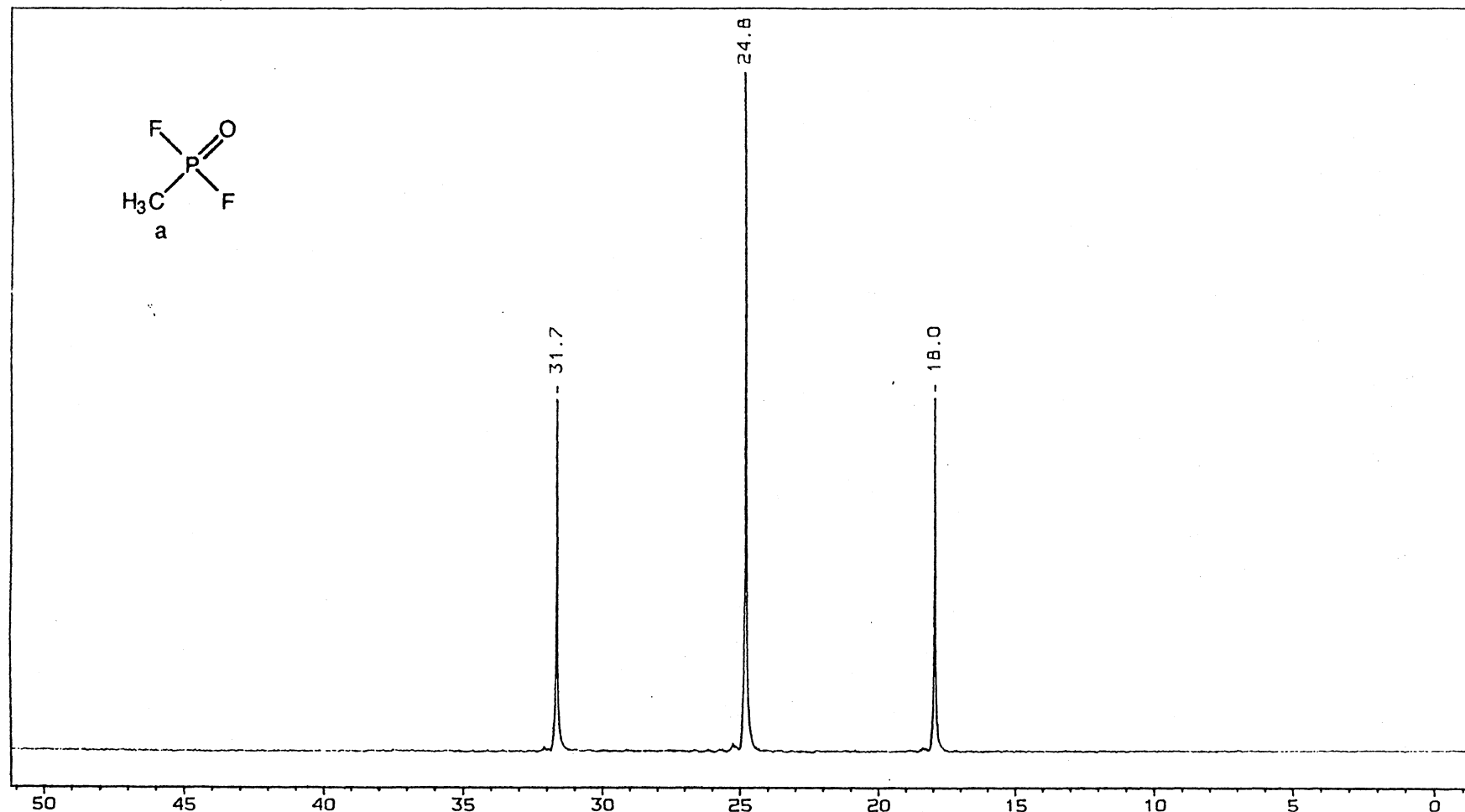


## METHYLPHOSPHONIC DIFLUORIDE

[676-99-3]

CH<sub>3</sub>F<sub>2</sub>OP

OPFF1

<sup>31</sup>P (1H) NMR

Experiment:	<sup>31</sup> P (1H) NMR	Obs. frequency:	161.9 MHz	shifts (ppm)		couplings (Hz)	
Solvent:	CDCl <sub>3</sub>	Spectral width:	8542 Hz	P	24.8	FP	1109.8
Reference:	cap. FFZ	Data points (FID):	34112				
Temperature:	30 °C	Pulse angle:	8µs 55°				
Instrument:	Varian VXR400S	Number of pulses:	4				
Date:	Mar 15 89	Repetition time:	5 s				
Spec.nr (NL):	occ16d	Line broadening:	1 s				
		Data points (spec):	32 k				