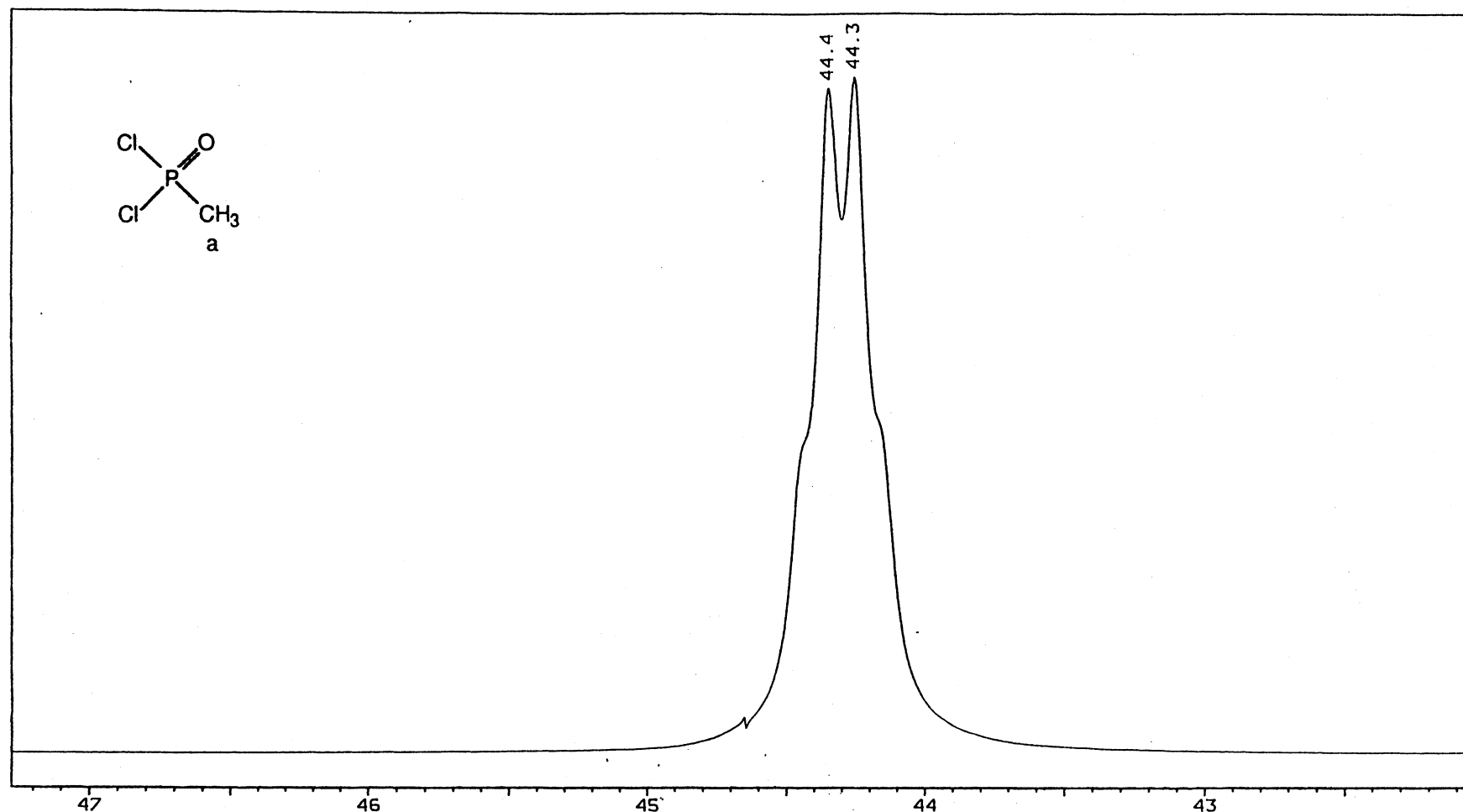


METHYLPHOSPHONIC DICHLORIDE
(676-97-1) CH₃Cl₂OP

OPGG1

³¹P NMR

Experiment:	³¹ P NMR	Obs.frequency:	161.9 MHz	couplings (Hz)
Solvent:	CDCl ₃	Spectral width:	851 Hz	aP 16
Reference:	cap. FFZ	Data points (FID):	8192	
Temperature:	30 °C	Pulse angle:	6μs 60°	
Instrument:	Varian VXR400S	Number of pulses:	360	
Date:	Jan 14 93	Repelition time:	6.8 s	
Spec.nr (NL):	pgo10c	Line broadening:	1 s	
		Data points (spec):	4 k	