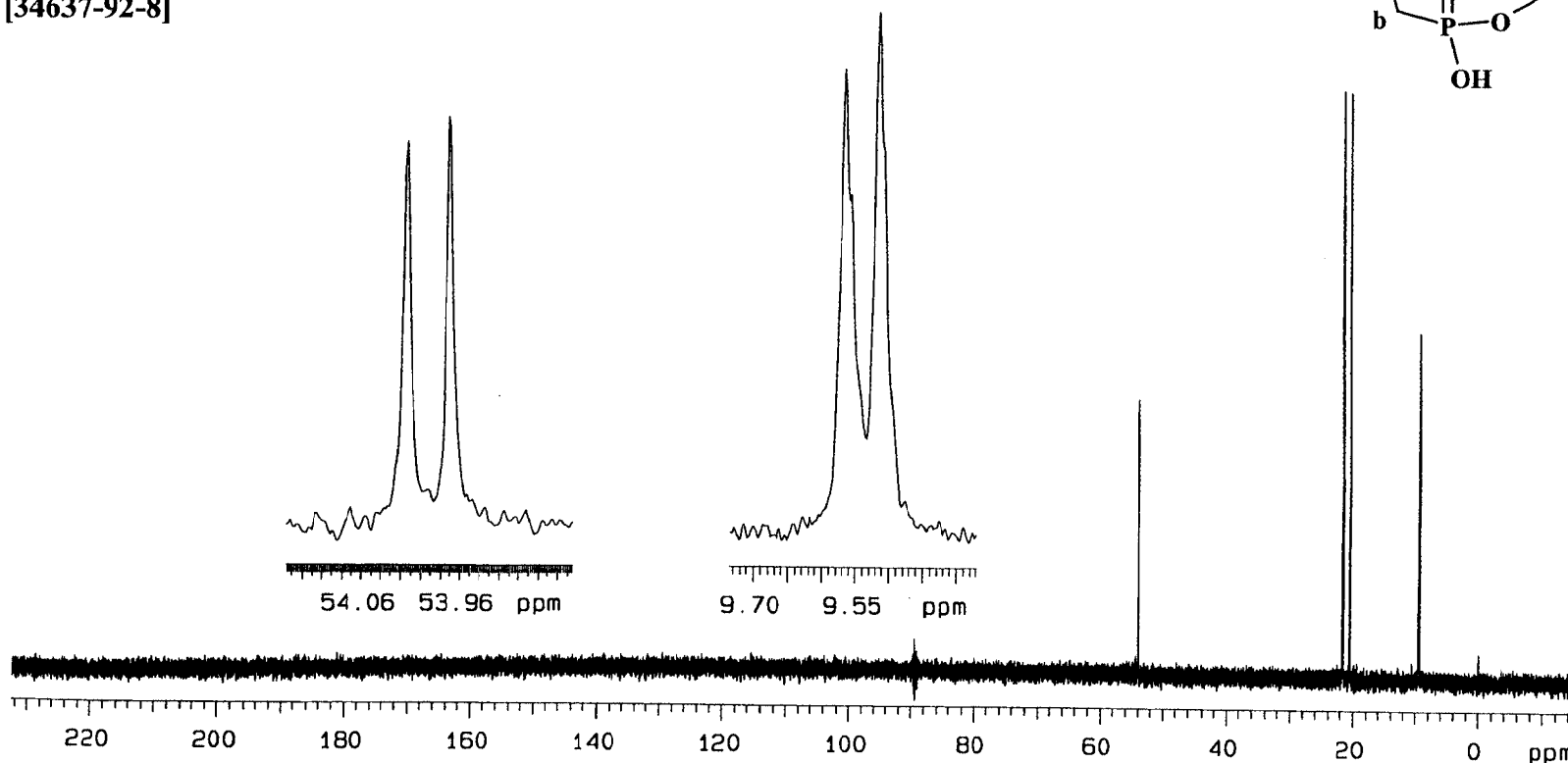
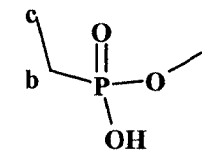


Methyl ethylphosphonate
[34637-92-8]

$^{13}\text{C}\{^1\text{H}\}$ NMR



Res.freq: 125.697 MHz
Solvent: D_2O (pH=14)
Temperature: 28°C
Concentration: 0.077 $\mu\text{l}/\mu\text{l}$
Reference: TSPA- d_4 [internal]
Spectral Width: 31298.9 Hz
Data points [Fid]: 115712
Data Points [Spectrum]: 256K

Pulse Width: 10 μs [72°]
Number of Scans: 4096
Line Broadening: exp. 0.5 Hz
Rep.time: 1.85 s
Resolution: 1.2 Hz (TSPA- d_4)
Instrument: Varian INOVA 500

nuc δ [ppm]	J[Hz]
a: 53.99	$J(\text{a,P}) = 5.5$
b: 21.12	$J(\text{b,P}) = 135.9$
c: 9.54	$J(\text{c,P}) = 6.5$

Un Mei