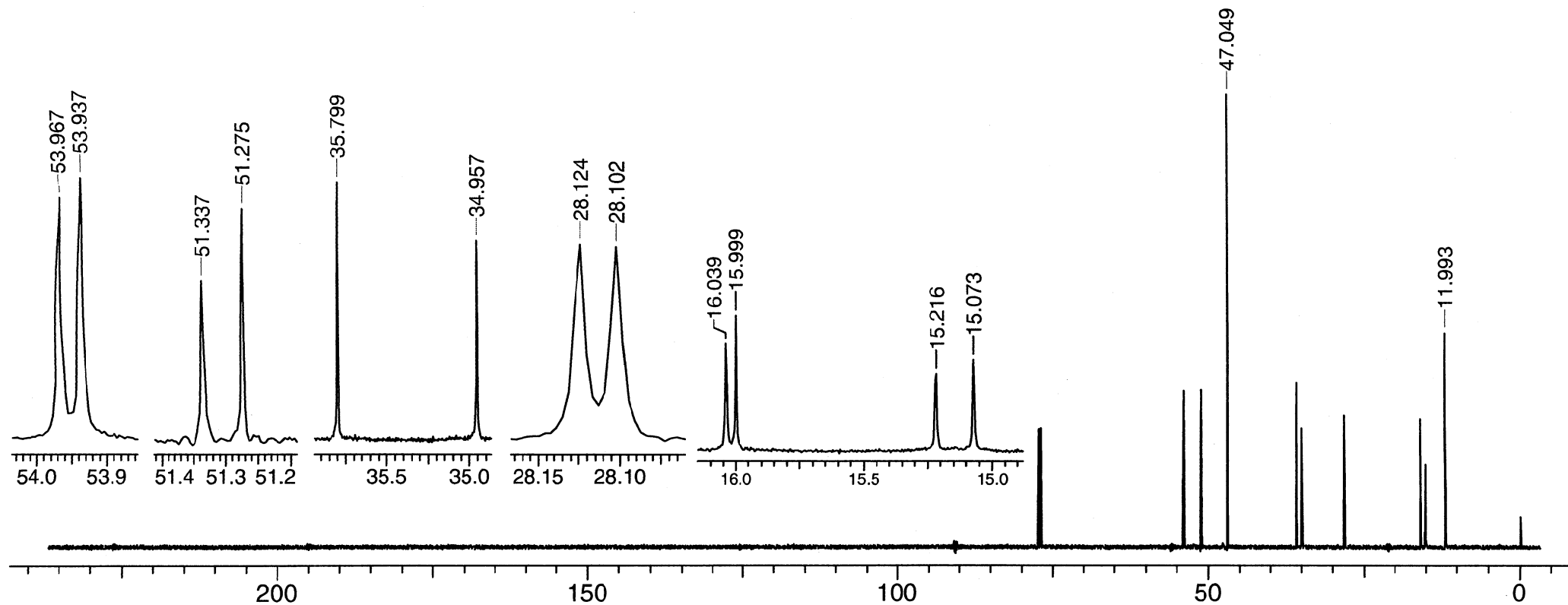


Methyl S-2-diethylaminoethyl propylphosphonothiolate

$^{13}\text{C}\{^1\text{H}\}$ NMR

7-3-721



Res.freq: 125.697 MHz

Solvent: CDCl_3

Temperature: 28°C

Concentration: 0.077 $\mu\text{l}/\mu\text{l}$

Reference: TMS [internal]

Spectral Width: 31298.9 Hz

Data points [Fid]: 115712

Data Points [Spectrum]: 256K

Pulse Width: 3.5 μs [45°]

Number of Scans: 1024

Line Broadening: exp. 0.5 Hz

Rep.time: 1.85 s

Resolution: 1.1 Hz (TMS)

Instrument: Varian INOVA 500

Van Meir

nuc δ [ppm]

a: 51.31

b: 15.14

c: 16.02

d: 35.38

e: 28.11

f: 53.95

g: 47.05

h: 11.99

J[Hz]

J(a,P) = 7.8

J(b,P) = 18.0

J(c,P) = 5.1

J(d,P) = 105.8

J(e,P) = 2.8

J(f,P) = 3.7

