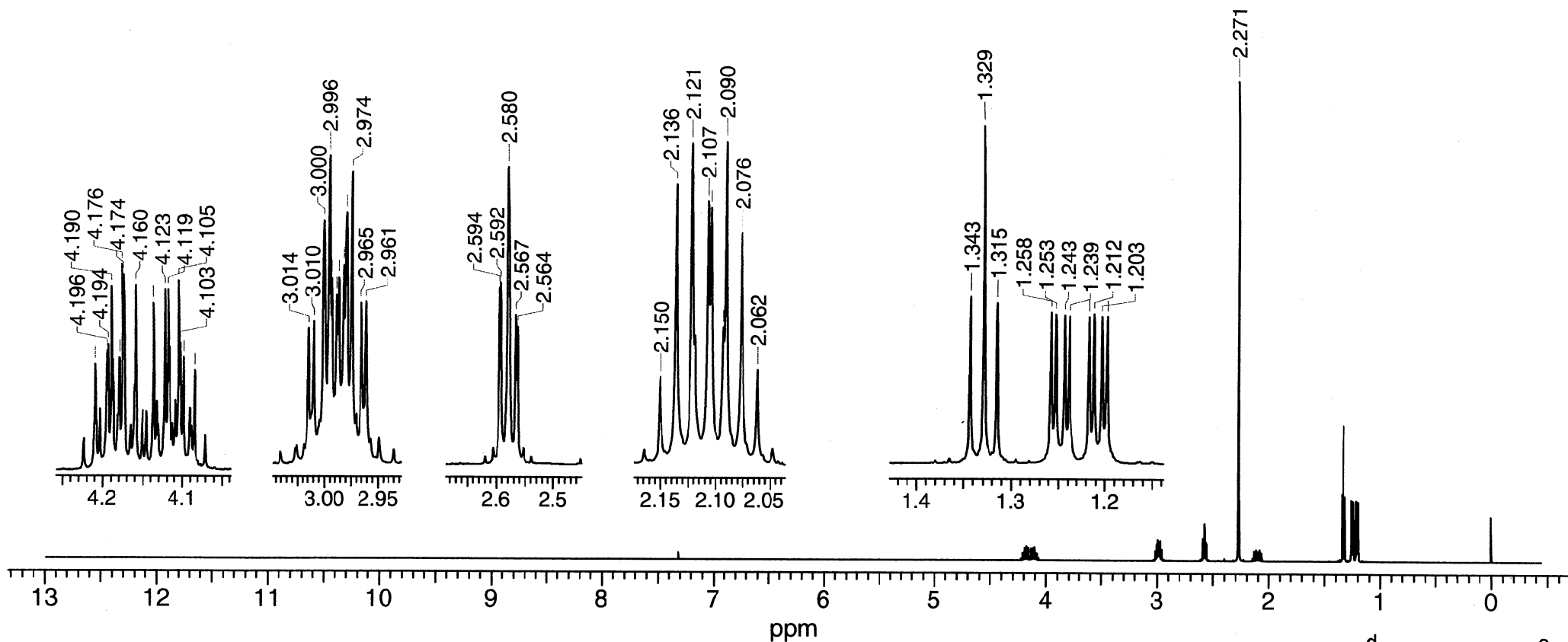


## Ethyl S-2-dimethylaminoethyl isopropylphosphonothiolate

 $^1\text{H}$  NMR

7-3-740



Res.freq: 499.83 MHz

Pulse Width: 1.7  $\mu\text{s}$  [24°]nuc  $\delta$ [ppm]

J[Hz]

Solvent:  $\text{CDCl}_3$ 

Number of Scans: 16

a: 1.329

J(a,b) = 7.0

Temperature: 28°C

Line Broadening: no

b: 4.074-4.224

Concentration: 0.077  $\mu\text{l}/\mu\text{l}$ 

Rep.time: 4.2 s

c: 2.106

J(c,P) = 15.6, J(c,d) = 7.2

Reference: TMS [internal]

Resolution: 0.6 Hz (TMS)

d,d': 1.226, 1.231

J(d,P) = 20.5, J(d',P) = 20.3

Spectral Width: 6712.5 Hz

Instrument: Varian INOVA 500

e: 2.935-3.040

Data points [Fid]: 56360

f: 2.539-2.619

Data Points [Spectrum]: 64K

g: 2.271

Un Mein

