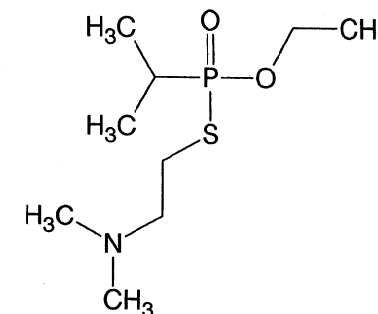
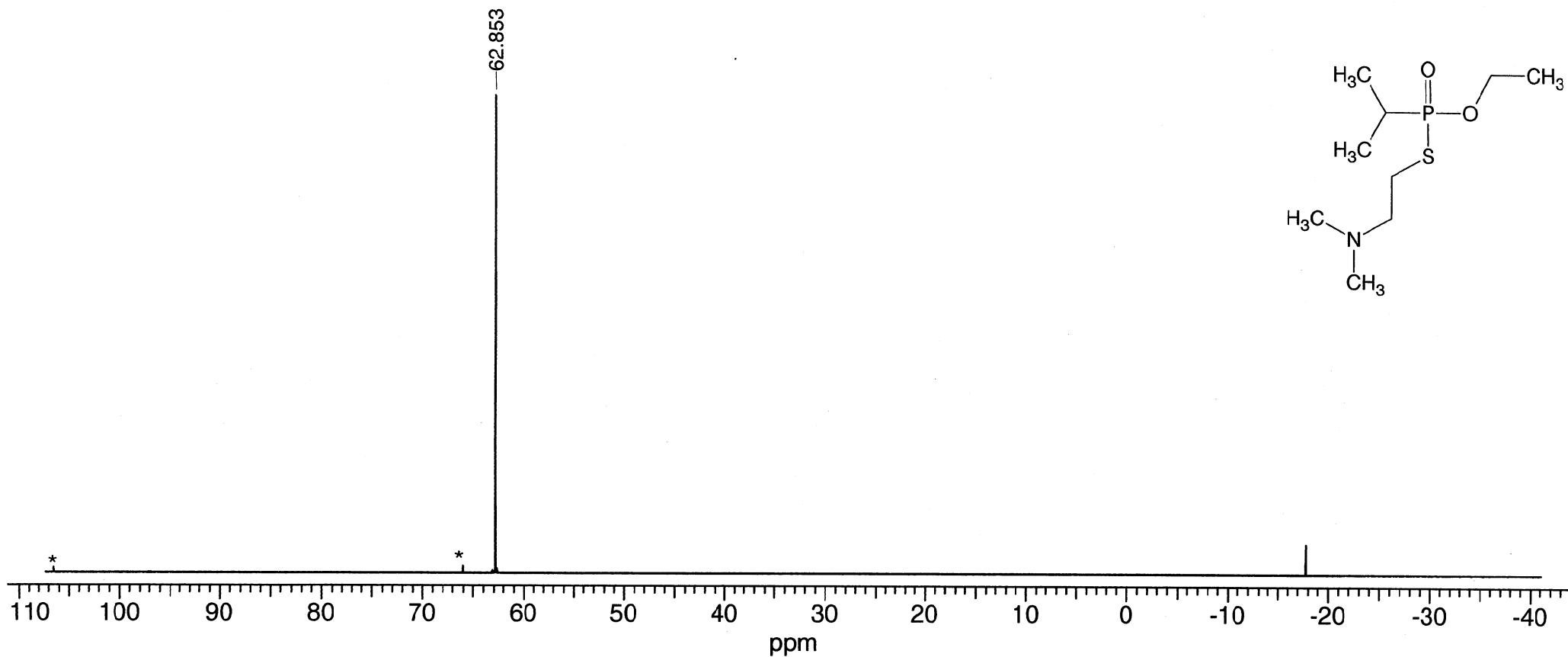


Ethyl S-2-dimethylaminoethyl isopropylphosphonothiolate

$^{31}\text{P}\{^1\text{H}\}$ NMR

7-3-742



Res.freq: 202.347 MHz

Solvent: CDCl_3

Temperature: 28°C

Concentration: 0.077 $\mu\text{l}/\mu\text{l}$

Reference: TPP [internal, -17.8 ppm]

Spectral Width: 30018.8 Hz

Data points [Fid]: 109184

Data Points [Spectrum]: 128K

Pulse Width: 4.8 μs [45°]

Number of Scans: 256

Line Broadening: exp 0.5

Rep.time: 1.82 s

Resolution: 0.7Hz (TPP)

Instrument: Varian INOVA 500

nuc δ [ppm]

P: 62.85

Un Mer