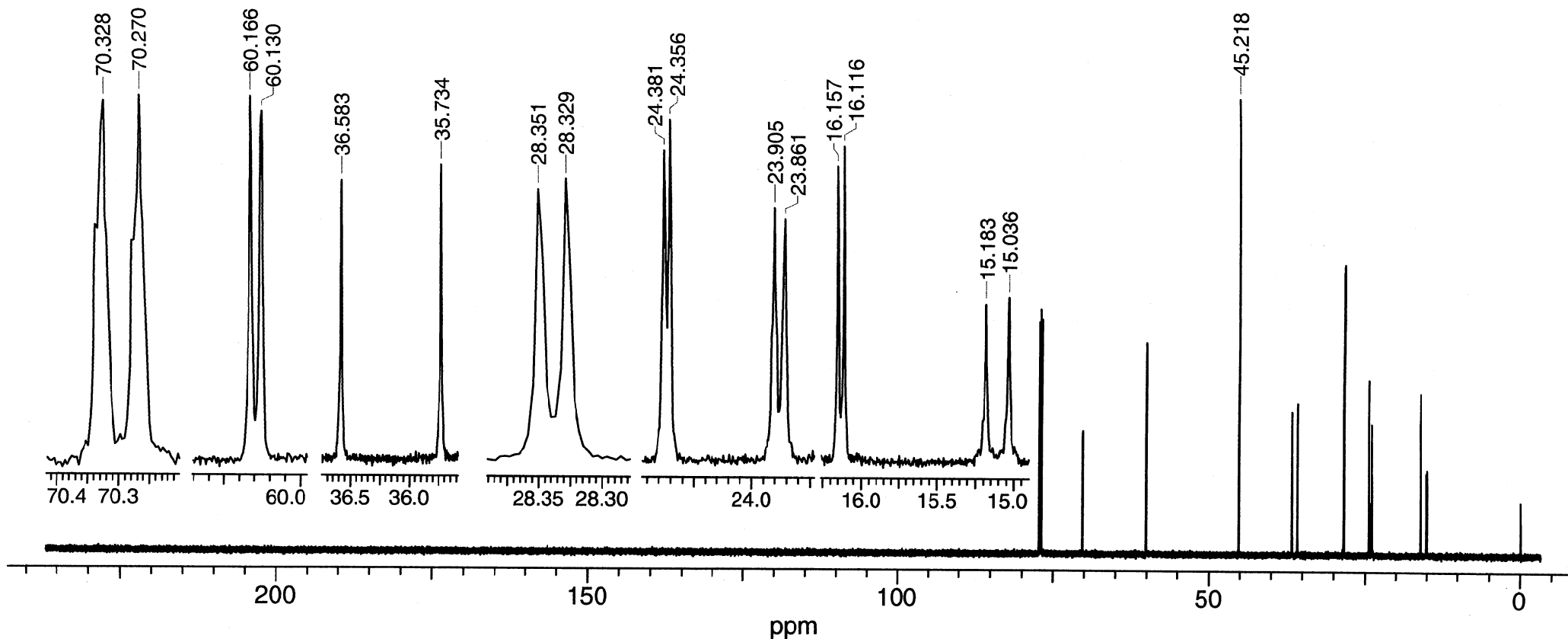


Isopropyl S-2-dimethylaminoethyl propylphosphonothiolate

$^{13}\text{C}\{^1\text{H}\}$ NMR

7-3-765



Res.freq: 125.697 MHz

Solvent: CDCl_3

Temperature: 28°C

Concentration: 0.077 $\mu\text{l}/\mu\text{l}$

Reference: TMS [internal]

Spectral Width: 31298.9 Hz

Data points [Fid]: 115712

Data Points [Spectrum]: 256K

Pulse Width: 3.5 μs [45°]

Number of Scans: 1024

Line Broadening: exp. 0.5 Hz

Rep.time: 1.85 s

Resolution: 1.0 Hz (TMS)

Instrument: Varian INOVA 500

Van Meir

nuc δ [ppm]

a, a': 23.88, 24.37

b: 70.30

c: 15.11

d: 16.14

e: 36.16

f: 28.34

g: 60.15

h: 45.22

J[Hz]

$J(a,P) = 5.5$, $J(a',P) = 3.2$

$J(b,P) = 7.4$

$J(c,P) = 18.4$

$J(d,P) = 5.1$

$J(e,P) = 106.7$

$J(f,P) = 2.8$

$J(g,P) = 4.6$

