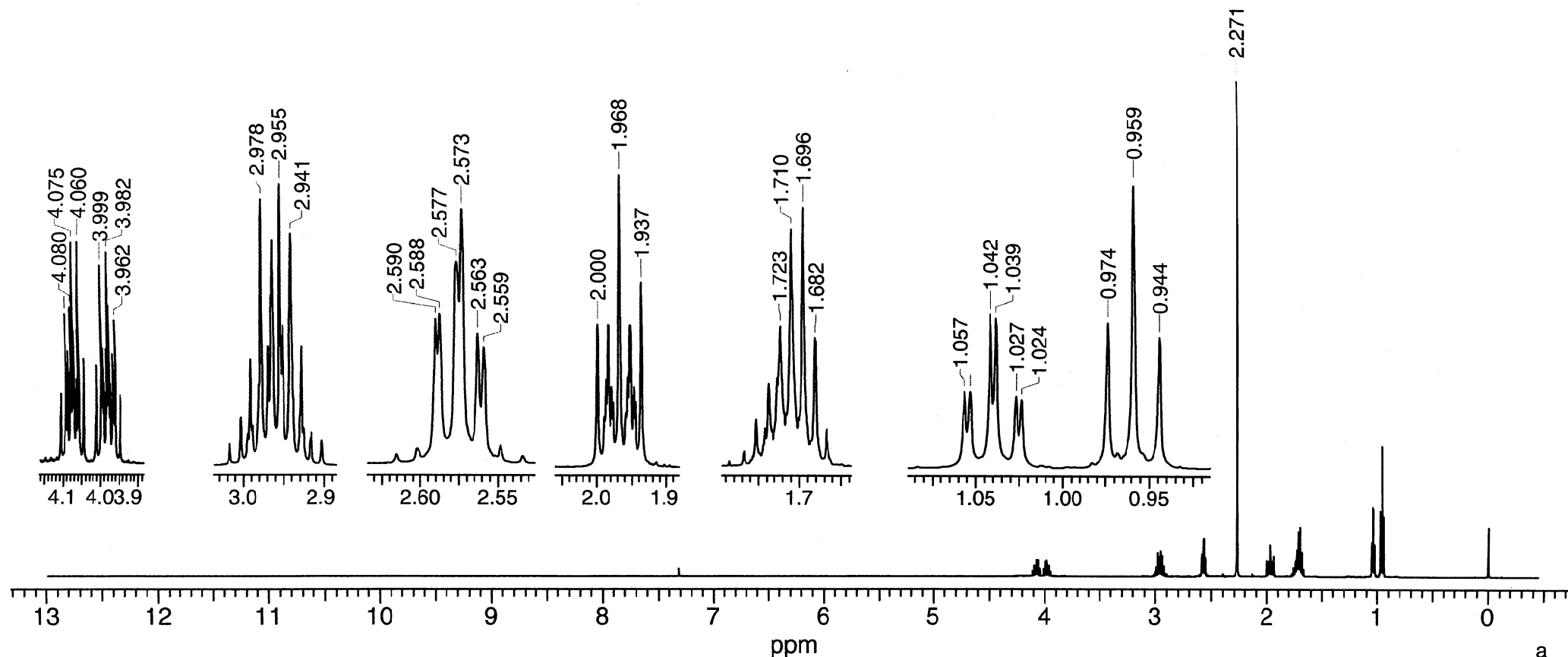


Propyl S-2-dimethylaminoethyl propylphosphonothiolate

¹H NMR

7-3-768



Res.freq: 499.83 MHz
 Solvent: CDCl₃
 Temperature: 28°C
 Concentration: 0.077 μl/ μl
 Reference: TMS [internal]
 Spectral Width: 6712.5 Hz
 Data points [Fid]: 56360
 Data Points [Spectrum]: 64K

Pulse Width: 1.7 μs [24°]
 Number of Scans: 16
 Line Broadening: no
 Rep.time: 4.2 s
 Resolution: 0.6 Hz (TMS)
 Instrument: Varian INOVA 500

Um Mein

nuc δ [ppm]
 a: 0.959
 b: 1.667-1.768
 c: 3.949-4.012, 4.047-4.108
 d: 1.937-2.000
 e: 1.667-1.768
 f: 1.041
 g: 2.903-3.018
 h: 2.534-2.615
 i: 2.271

J [Hz]
 J(a,b) = 7.4
 J(f,P) = 1.6, J(f,e) = 7.4

