

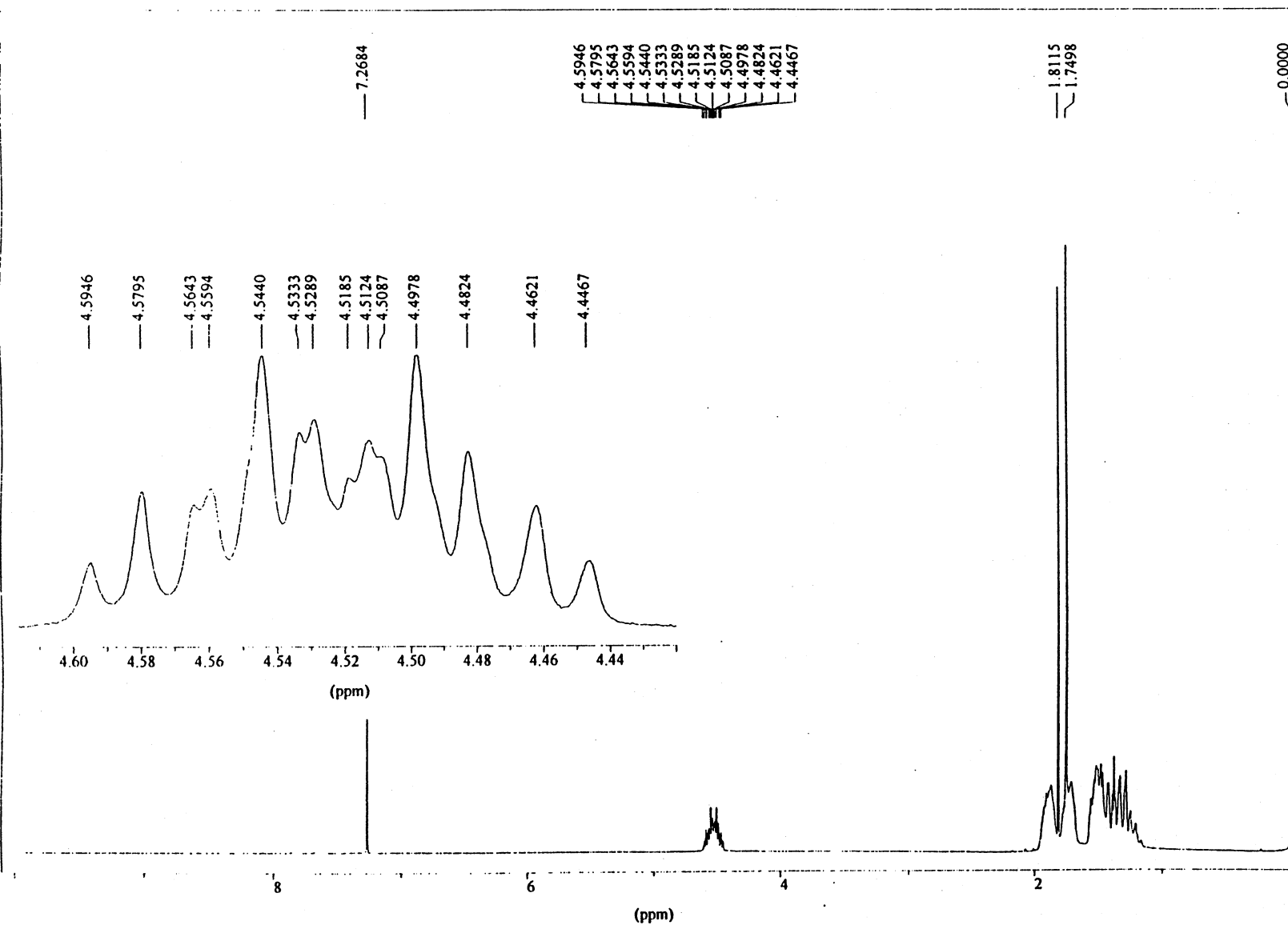
# DICYCLOHEXYL METHYLTHIOPHOSPHONATE

CAS RN 55281-41-9

14-3-28

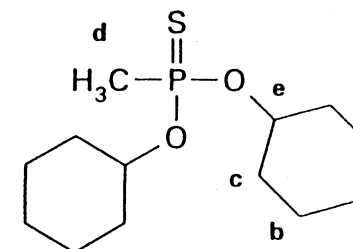
Instrument: Bruker AC-250  
Nucleus: <sup>1</sup>H  
Frequency: 250.13 Hz

Solvent: CDCl<sub>3</sub>  
Concentration: 21 mg/ml  
Temperature: 23°C  
Reference: TMS (int.)  
Spectral width: 2873.6 Hz  
Pulse width: 4.7 μs (45°)  
Repetition time: 12.4 s  
Data points: FID/Spectrum: 64 K/64 K  
Scans: 64  
Line broadening: 0.05 Hz (exp.)  
Resolution: 0.5 Hz (TMS)



## Assignments

a,b,c:  $\delta = 1.2 - 2.0$   
d:  $\delta = 1.78(d); J_{d-p} = 15.4 \text{ Hz}$   
e:  $\delta = 4.52(dtt);$   
 $J_{e-p} = 11.6 \text{ Hz},$   
 $J_{e-c}(\text{trans}) = 8.9 \text{ Hz},$   
 $J_{e-c}(\text{cis}) = 3.8 \text{ Hz}$



OPCW Code: 14-3-28 (p1/1)