

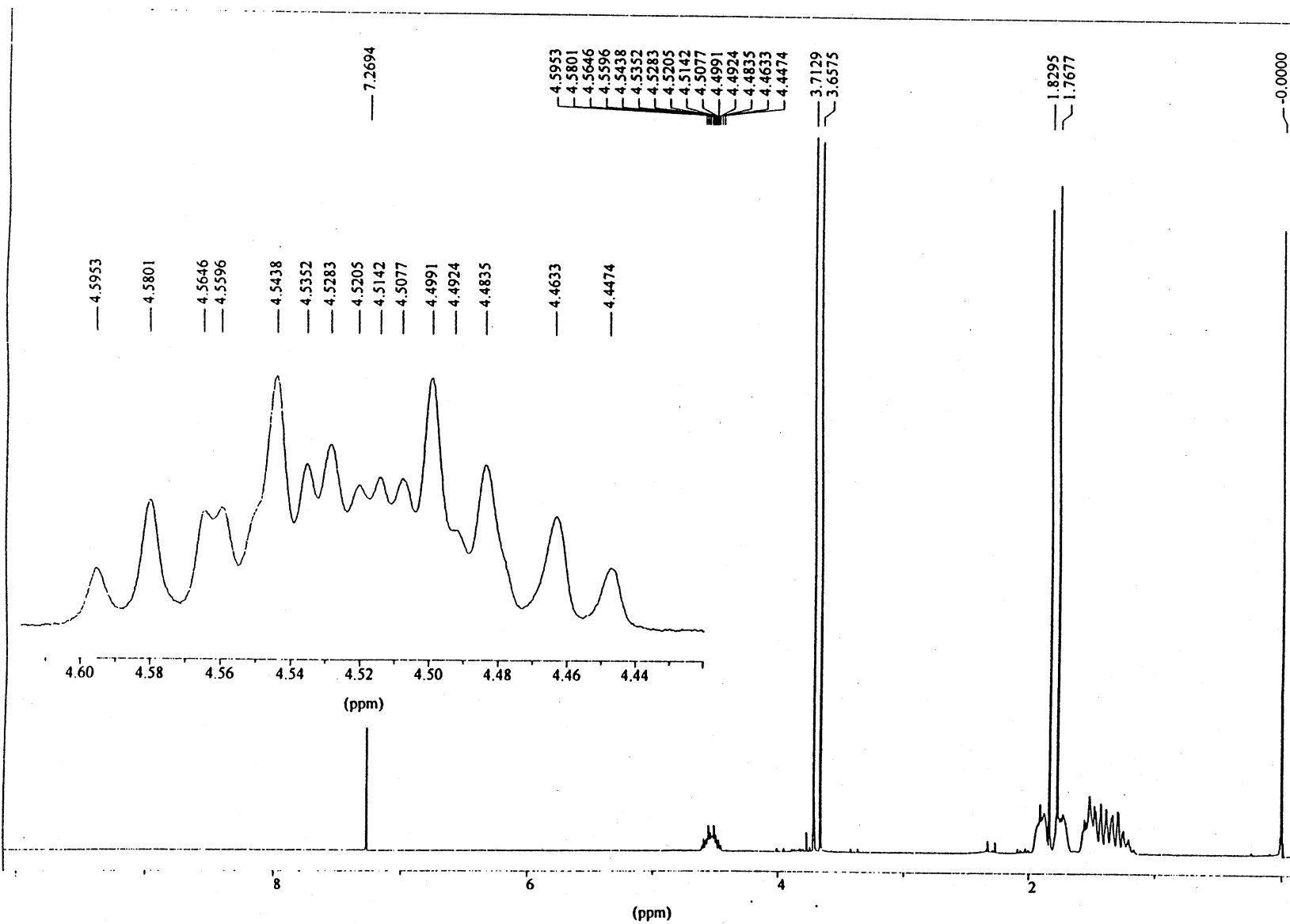
CYCLOHEXYL METHYL METHYLTHIOPHOSPHONATE

CAS RN 62507-64-6

14-3-31

Instrument: Bruker AC-250
Nucleus: ¹H
Frequency: 250.13 Hz

Solvent: CDCl₃
Concentration: 22 mg/ml
Temperature: 23°C
Reference: TMS (int.)
Spectral width: 2873.6 Hz
Pulse width: 4.7 μs (45°)
Repetition time: 12.4 s
Data points
FID/Spectrum: 64 K/64 K
Scans: 64
Line broadening: 0.05 Hz (exp.)
Resolution: 0.7 Hz (TMS)



Assignments

a,b,c: $\delta = 1.2 - 2.0$
d: $\delta = 1.80(d)$; $J_{d,p} = 15.4$ Hz
e: $\delta = 3.69(d)$; $J_{e,p} = 13.9$ Hz
f: $\delta = 3.69(dtt)$;
 $J_{f,p} = 11.2$ Hz,
 $J_{f-c}(\text{trans}) = 9.0$ Hz,
 $J_{f-c}(\text{cis}) = 3.9$ Hz

