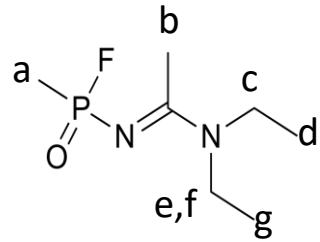


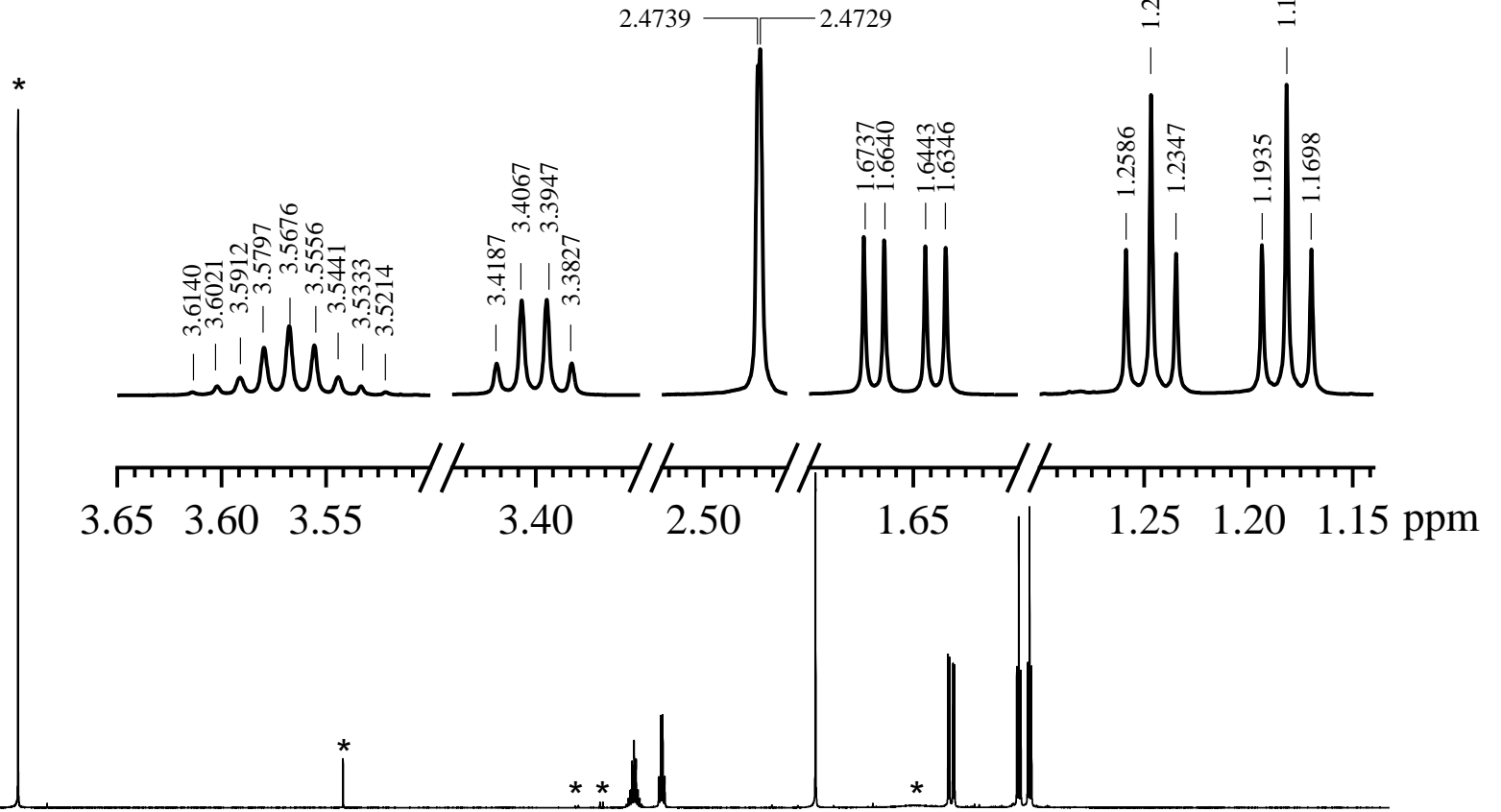
¹H NMR
N-(1-(Diethylamino)ethylidene)-P-methylphosphonamidic fluoride

23-3-0005

[2387496-12-8]



1.A.13



Parameter	Value	nuc.	δ [ppm]	J [Hz]
Solvent:	CDCl ₃			
Concentration:	500 µg/mL			
Reference Substance:	CDCl ₃			
Sample Temperature:	303 K			
Resonance Frequency:	600.07 MHz			
Spectral width:	12019.231 Hz			
Data Points (FID,spec):	64 k, 128 k			
Flip angle, Pulse Width:	30°, 5.08 µs			
No. Scans; Rep. time:	16, 1.0 s			
Weighting; Line broad.:	exp, 0.3 Hz			
Spectral Resolution:	0.62 Hz (CDCl ₃)			
Instrument:	Bruker Avance III 600			
		a	1.6542	5.82(F) 17.64 (P)
		b	2.4734	0.60 (P)
		c	3.4007	7.20 (d)
		d	1.2467	7.20 (c)
		e	3.5744	13.75 (f), 7.14 (g)
		f	3.5575	13.75 (e), 7.14 (g)
		g	1.1817	7.14 (e/f)