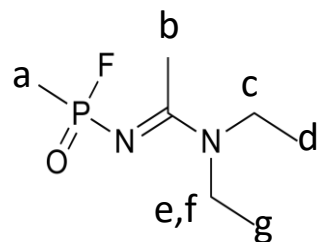


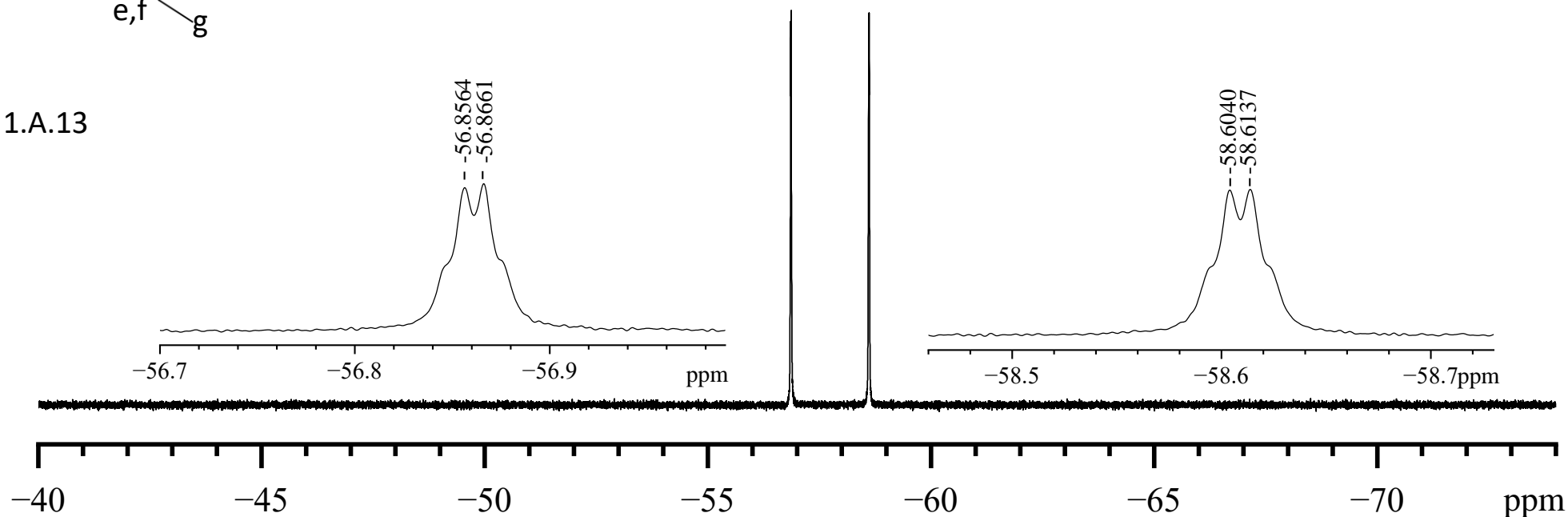
N-(1-(Diethylamino)ethylidene)-P-methylphosphonamidic fluoride

23-3-0009

[2387496-12-8]



1.A.13



Solvent:	CDCl ₃	Flip angle, Pulse Width:	90°, 14.00 μs	nuc.	δ [ppm]	J [Hz]
Concentration:	500 μg/mL	No. Scans; Rep. time:	8, 10.0 s	F	-57.7351	986.75 (P), -5.48 (a)
Reference Substance:	ext. CFC ₃	Weighting; Line broad.:	None			
Sample Temperature:	303 K	Spectral Resolution:	14.68 Hz (F)			
Resonance Frequency:	564.63 MHz	Instrument:	Bruker Avance III 600			
Spectral width:	28409.091 Hz					
Data Points (FID, spec):	128 k, 128 k					