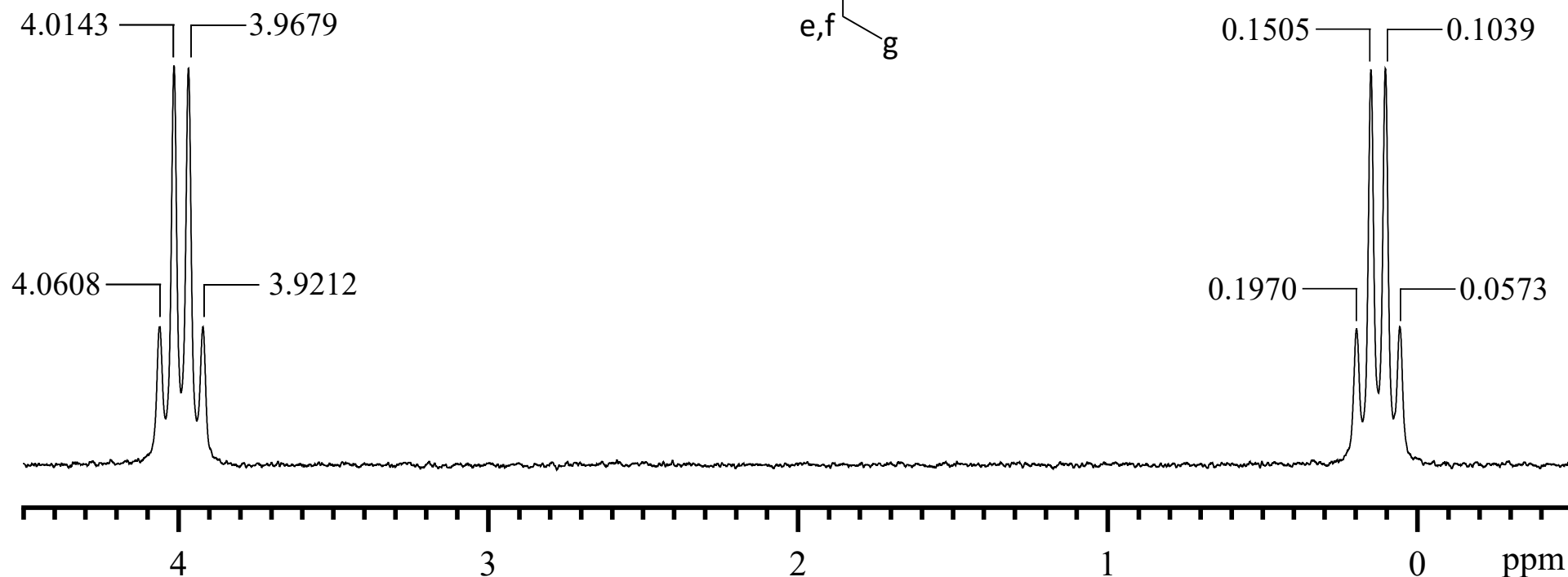
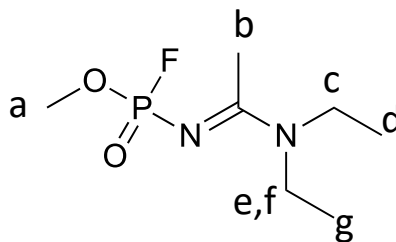


Methyl N-(1-(diethylamino)ethylidene)phosphoramidofluoridate

[2387496-04-8]



Solvent:	CDCl ₃	Flip angle, Pulse Width:	30°, 3.00 μs	nuc.	δ [ppm]	J [Hz]
Concentration:	500 μg/mL	No. Scans; Rep. time:	256, 2.0 s	P	2.0591	938.58 (F); 11.31 (a)
Reference Substance:	ext. H ₃ PO ₄	Weighting; Line broad.:	exp, 1.0 Hz			
Sample Temperature:	303 K	Spectral Resolution:	4.77 Hz (P)			
Resonance Frequency:	242.91 MHz	Instrument:	Bruker Avance III 600			
Spectral width:	12175.325 Hz					
Data Points (FID, spec):	64 k, 128 k					