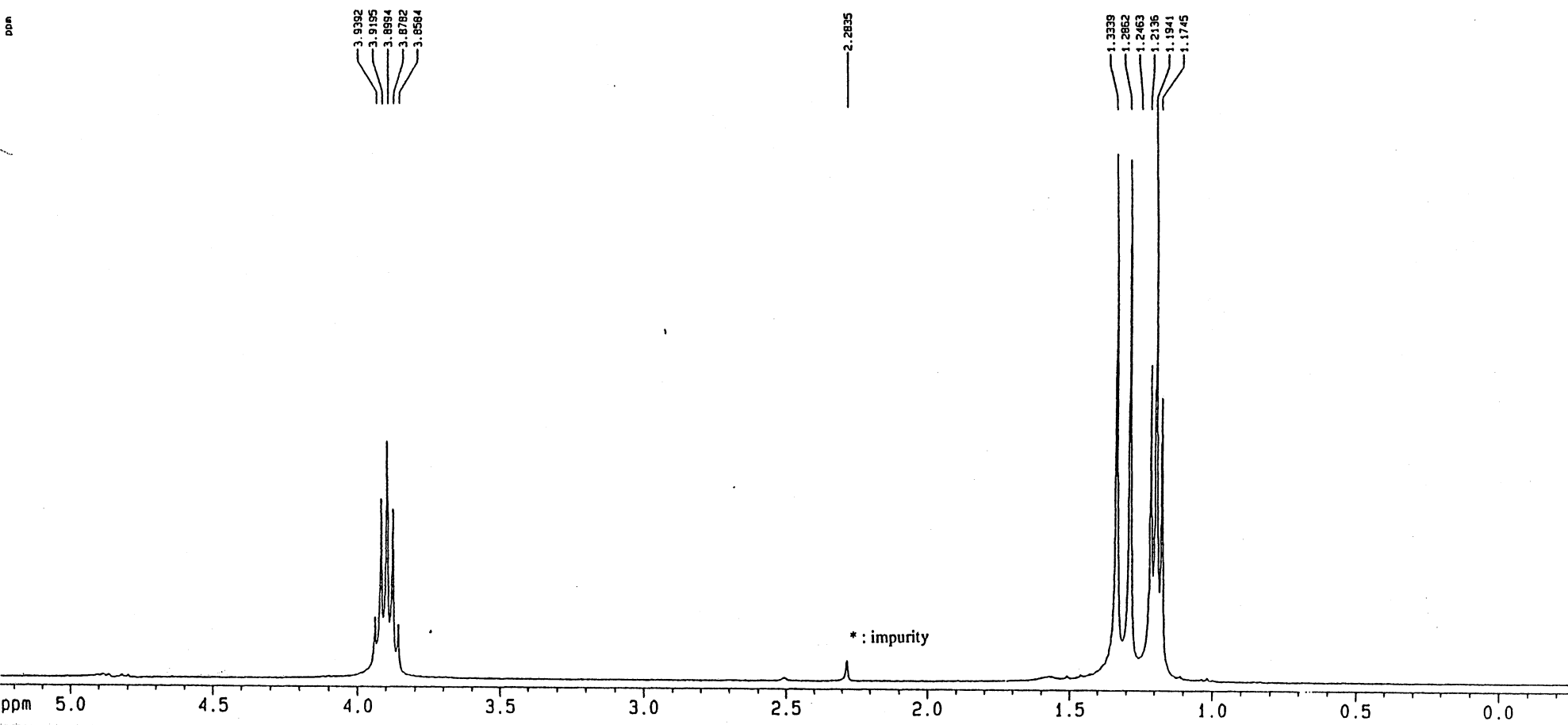
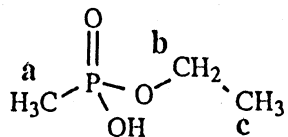


1-3-93



**ETHYL METHYLPHOSPHONIC ACID**



CAS number : 1832-53-7  
 MF : C<sub>3</sub>H<sub>9</sub>O<sub>3</sub>P  
 Solvent/Lock : DMSO d<sub>6</sub>/DMSO d<sub>6</sub>  
 Nucleus : <sup>1</sup>H  
 Apparatus : Bruker AMX360  
 Frequency : 360.13 MHz  
 Temperature : 23°C  
 Concentration : ≈ 40 mg/ml

Reference internal: DMSO d<sub>6</sub> 2.50 ppm  
 Spectral width : 3300 Hz  
 Pulse Width : 9.5 μs (90°)  
 Repetition Time : 4 s  
 Data points : FID = 16K, SPC = 32K  
 Line Broadning : No

a : δ = 1.31 ppm ; J<sub>P-a</sub> = 17.2 Hz  
 b : δ = 3.90 ppm ; J<sub>P-b</sub> = 8.0 Hz  
 J<sub>b-c</sub> = 7.0 Hz

c : δ = 1.19 ppm  
 shift of OH proton depends on concentration and is thus not given.

OPCW Code:1-3-93 (P1/1)