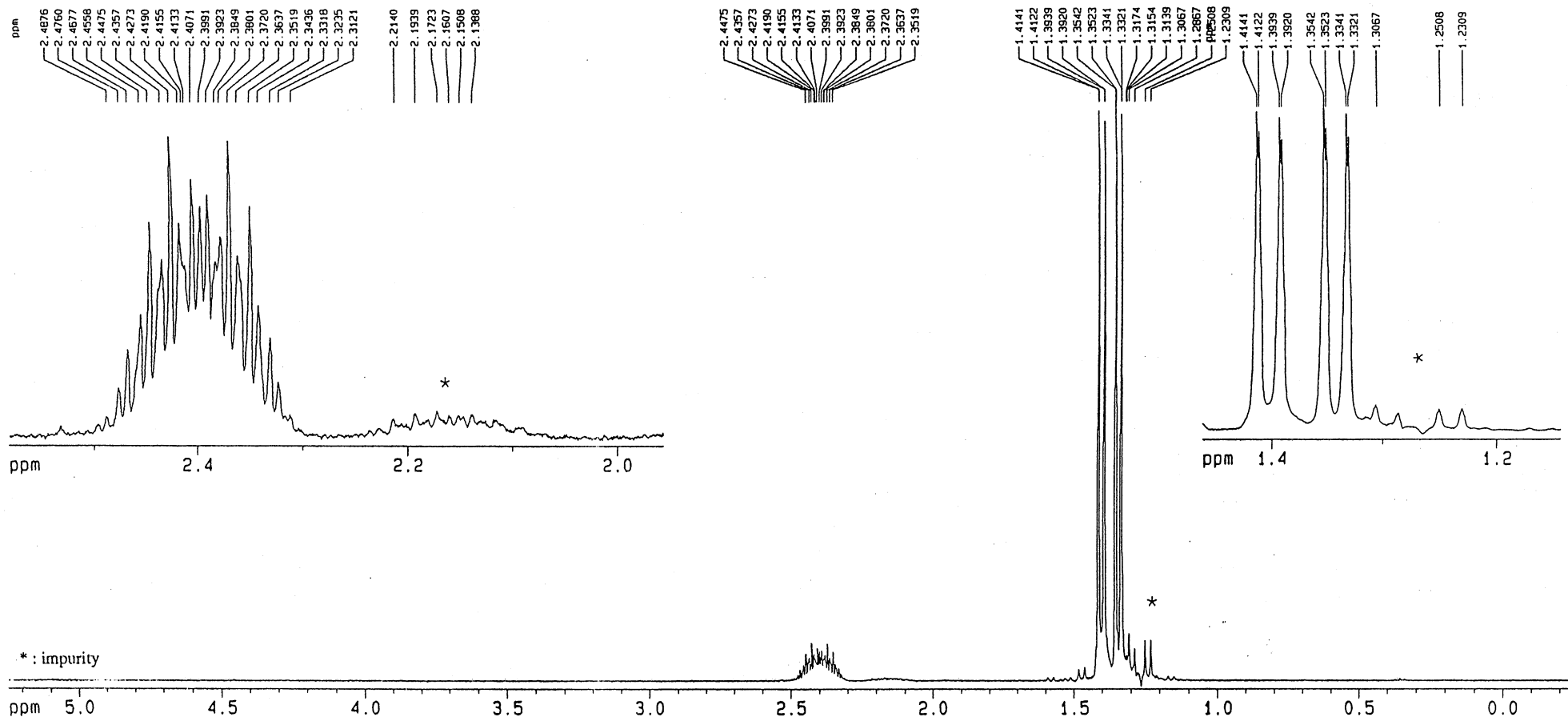
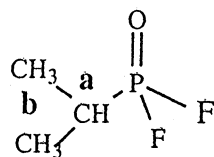


1-3-225



(1-METHYLETHYL)PHOSPHONICDIFLUORIDE



CAS number : [647-42-9]
 MF : C₃H₇OF₂P
 Solvent/Lock : CDCl₃/CDCl₃
 Nucleus : ¹H
 Apparatus : Bruker AMX360
 Frequency : 360.13 MHz
 Temperature : 23°C
 Concentration : ≈ 40 mg/ml

Reference : CHCl₃ trace internal
 Spectral width : 3000 Hz
 Pulse Width : 9.5 μs (90°)
 Repetition Time : 4 s
 Data points : FID = 16K, SPC = 32K
 Line Broadning : No

a : δ = 2.40 ppm ; J_{P-a} = 19.9 Hz ; J_{F-a} = 3.0 Hz
 b : δ = 1.26 ppm ; J_{P-b} = 21.6 Hz ; J_{a-b} = 7.2 Hz

OPCW Code:1-3-225 (p1/1)