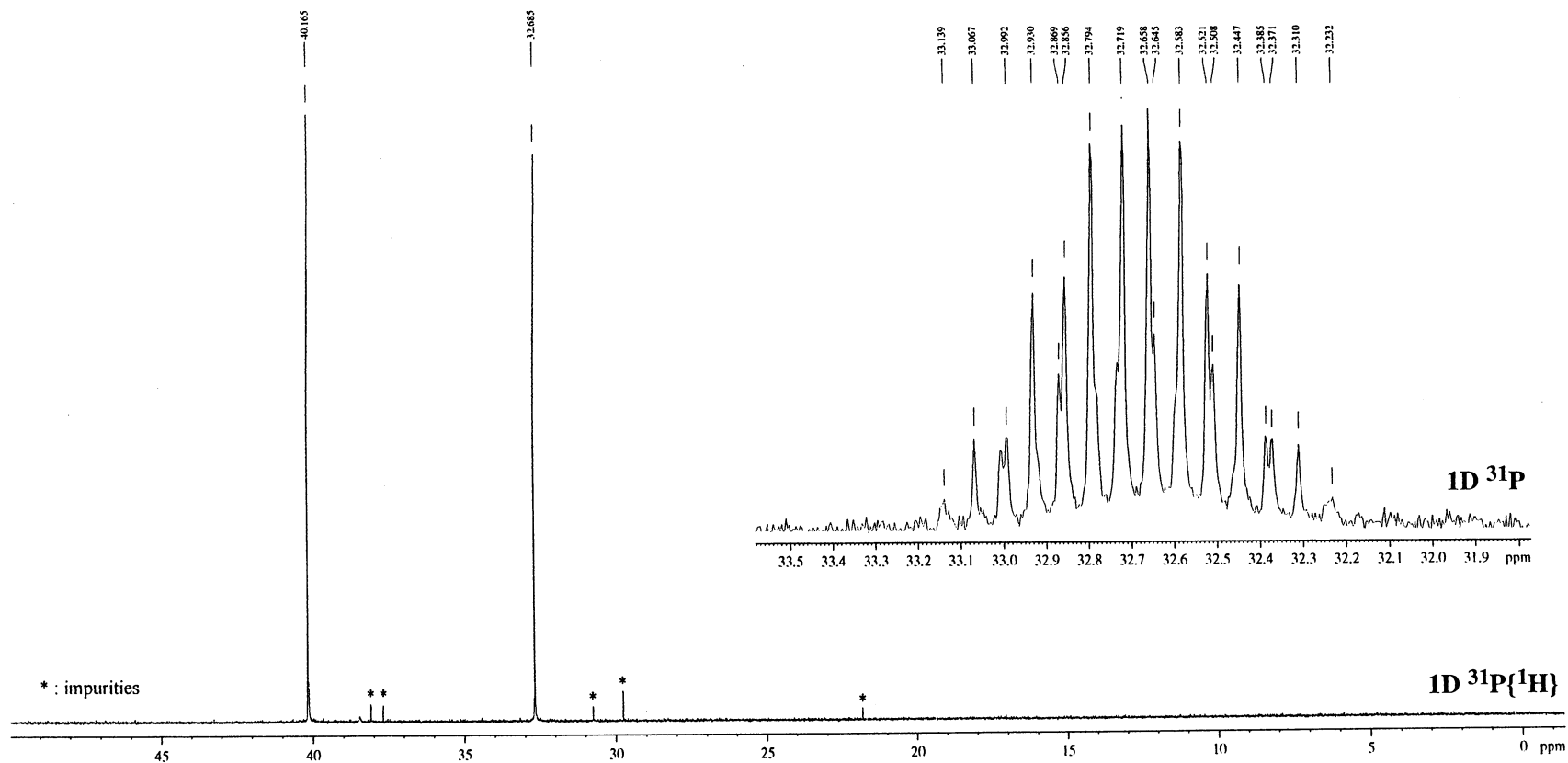


31P

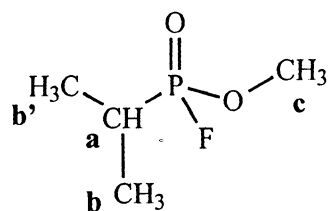
1-3-273



METHYL ISOPROPYLPHOSPHONOFUORIDATE

 MF : C₄H₁₀F₂O₂P CAS :

ASSIGNMENT


 $\delta = 36.43 \text{ ppm ;}$
 $J_{P-F} = 1090.6 \text{ Hz}$
 $J_{P-a} = 19.8 \text{ Hz}$
 $J_{P-b} = 19.9 \text{ Hz}$
 $J_{P-c} = 10.9 \text{ Hz}$