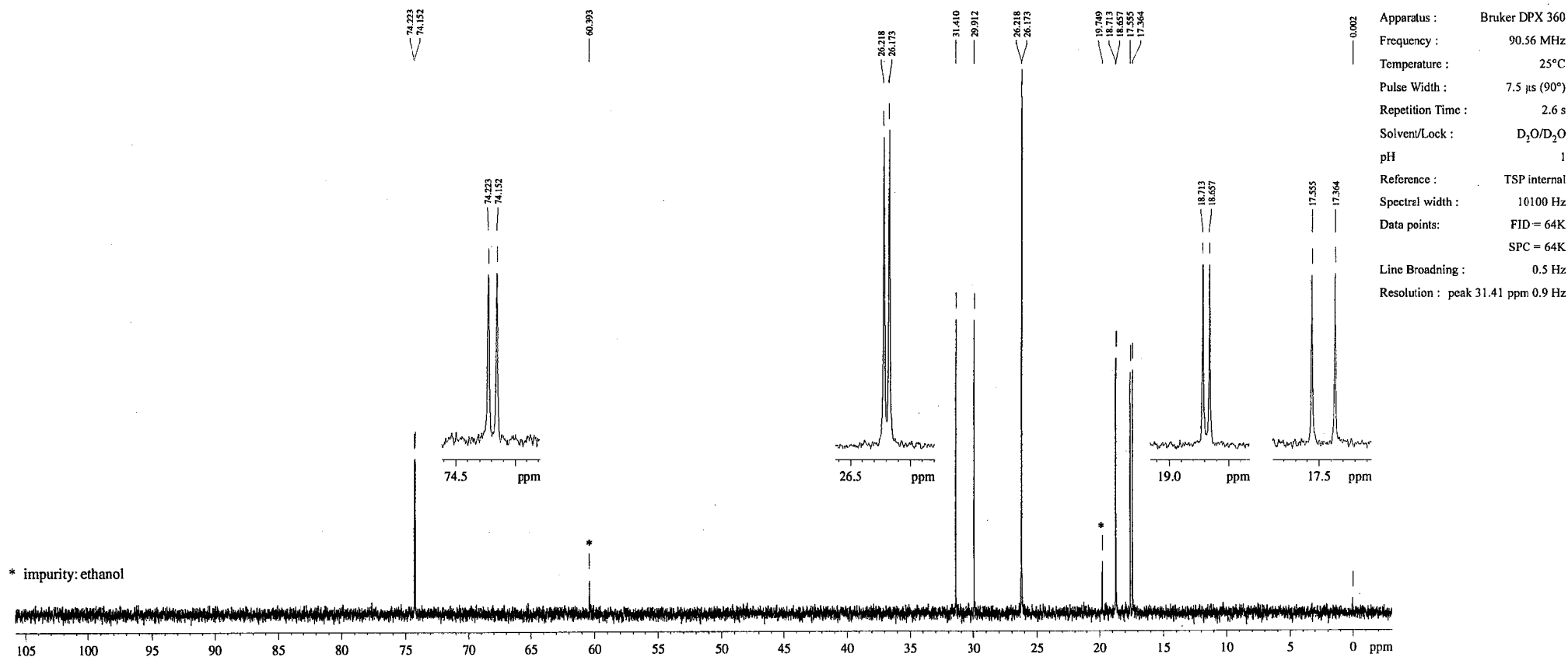


<sup>13</sup>C

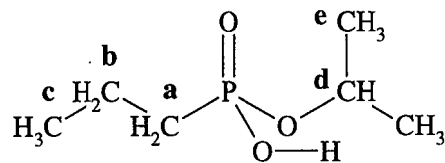


\* impurity: ethanol

ISOPROPYL PROPYLPHOSPHONATE (pH=1)

MF : C<sub>6</sub>H<sub>15</sub>O<sub>3</sub>P CAS :

ASSIGNMENT



- a : δ = 30.70 ppm ; J<sub>P-a</sub> = 135.6 Hz
- b : δ = 18.68 ppm ; J<sub>P-b</sub> = 5.2 Hz
- c : δ = 17.46 ppm ; J<sub>P-c</sub> = 17.3 Hz
- d : δ = 74.19 ppm ; J<sub>P-d</sub> = 6.5 Hz
- e : δ = 26.20 ppm ; J<sub>P-e</sub> = 4.1 Hz

OPCW Code: 01-3-0285 (p.1/1)