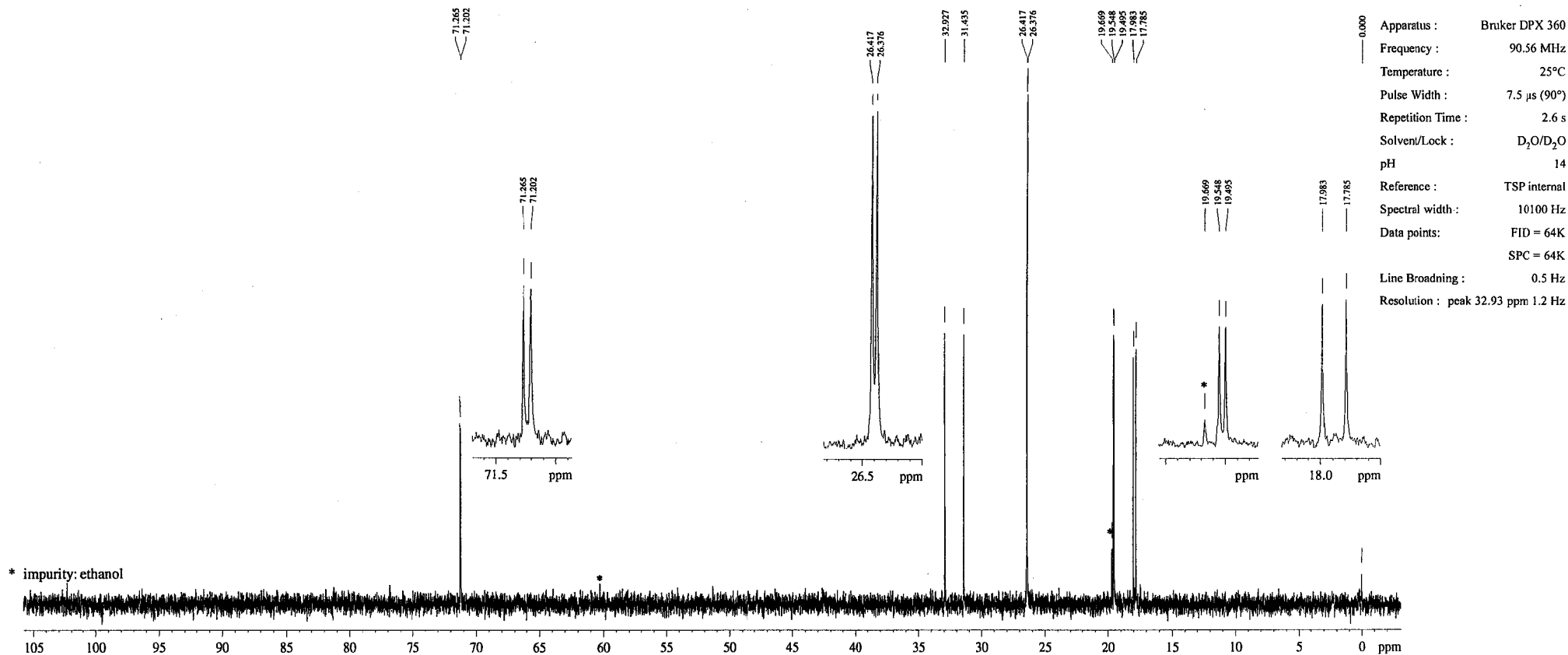
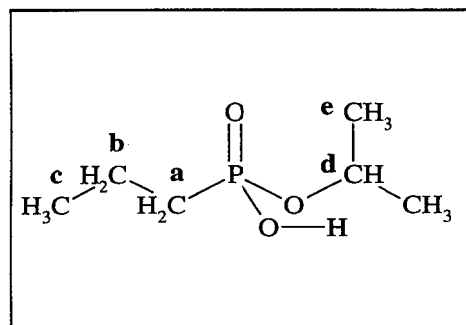


¹³C



ISOPROPYL PROPYLPHOSPHONATE (pH=14)

MF : C₆H₁₅O₃P CAS :



ASSIGNMENT

- a : δ = 32.17 ppm ; J_{P-a} = 135.2 Hz
- b : δ = 19.52 ppm ; J_{P-b} = 4.8 Hz
- c : δ = 17.86 ppm ; J_{P-c} = 18.0 Hz
- d : δ = 71.23 ppm ; J_{P-d} = 5.7 Hz
- e : δ = 26.39 ppm ; J_{P-e} = 3.7 Hz

OPCW Code: 01-3-0288 (p.1/1)