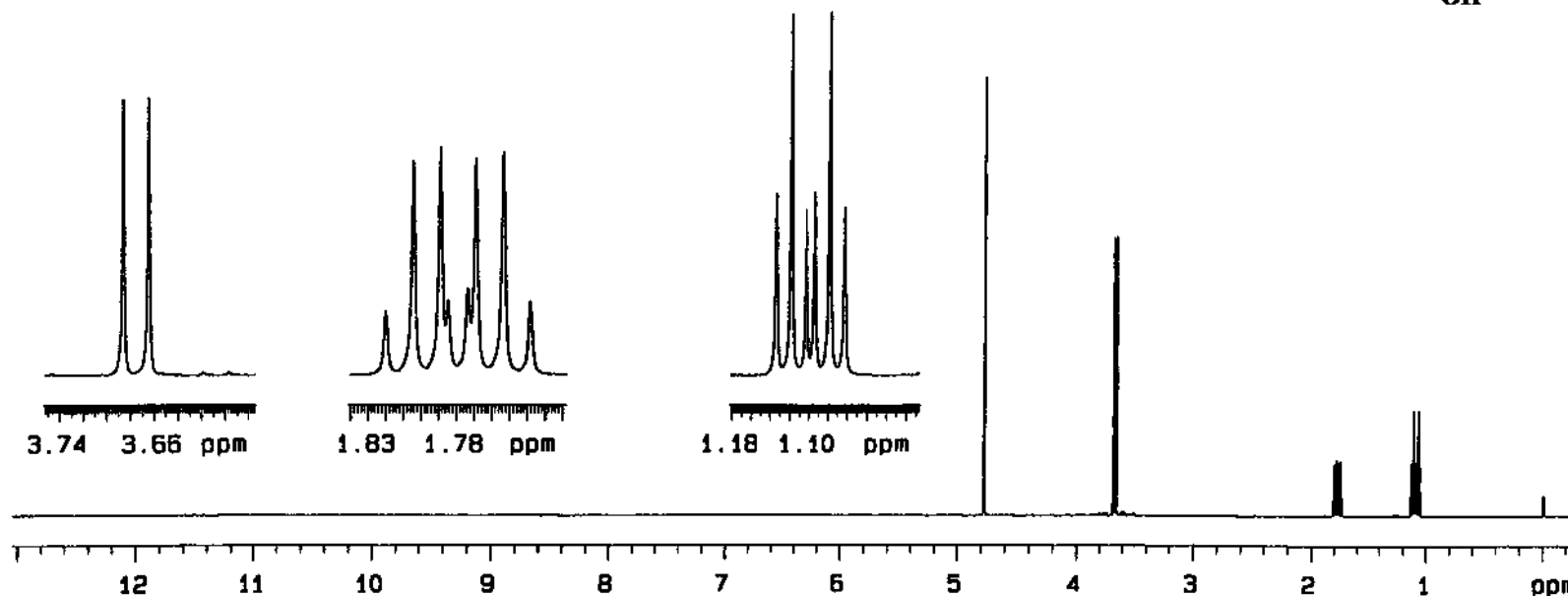
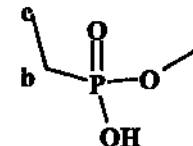


Methyl ethylphosphonate
[34637-92-8]

^1H NMR



Res.freq: 499.83 MHz
Solvent: D_2O (pH=1)
Temperature: 28°C
Concentration: 0.077 $\mu\text{l}/\mu\text{l}$
Reference: TSPA- d_4 [internal]
Spectral Width: 6712.5 Hz
Data points [Fid]: 134272
Data Points [Spectrum]: 128K

Pulse Width: 1.8 μs (16°)
Number of Scans: 32
Line Broadening: no
Rep.time : 10.0 s
Resolution: 0.5 Hz [HDO]
Instrument: Varian INOVA 500

nuc δ [ppm]	J(Hz)
a: 3.677	$J(\text{a,P}) = 10.8$
b: 1.780	$J(\text{b,c}) = 7.7, J(\text{b,P}) = 17.7$
c: 1.100	$J(\text{c,P}) = 20.1$

Um Mian