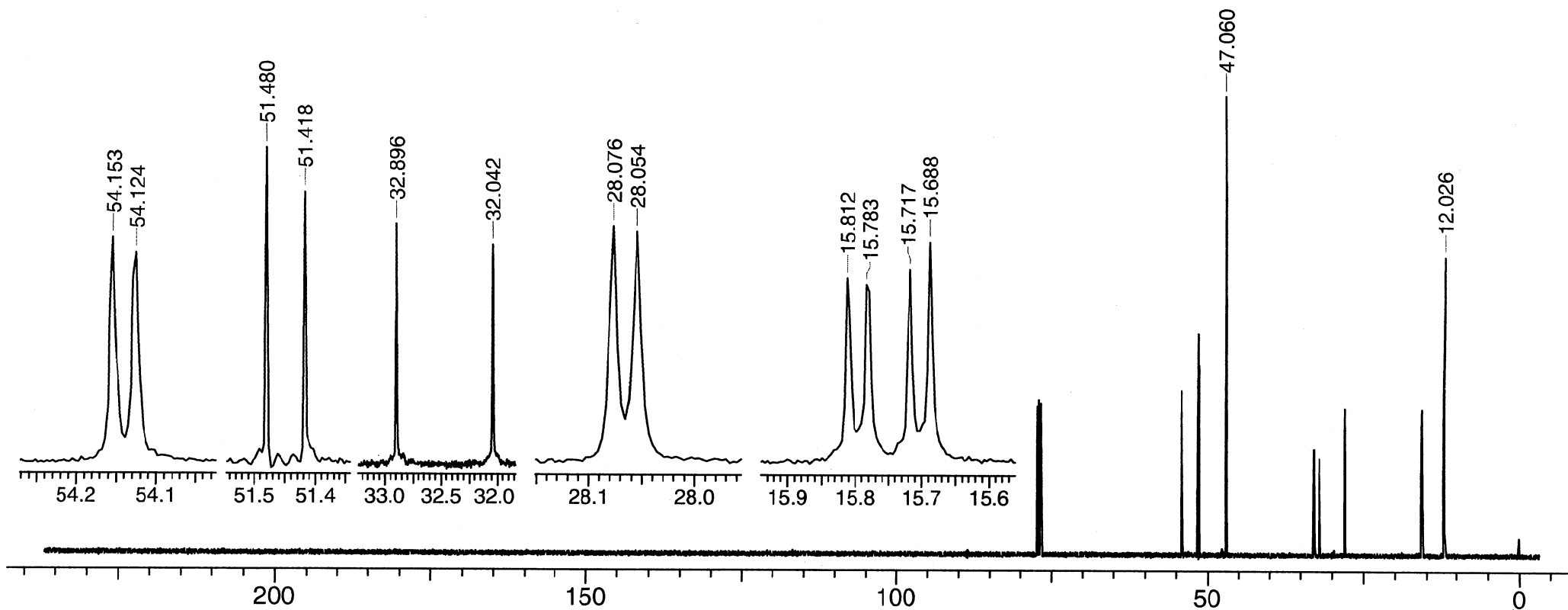


Methyl S-2-diethylaminoethyl isopropylphosphonothiolate

$^{13}\text{C}\{^1\text{H}\}$ NMR

7-3-733



Res.freq: 125.697 MHz

Solvent: CDCl_3

Temperature: 28°C

Concentration: 0.077 $\mu\text{l}/\mu\text{l}$

Reference: TMS [internal]

Spectral Width: 31298.9 Hz

Data points [Fid]: 115712

Data Points [Spectrum]: 256K

Pulse Width: 3.5 μs [45°]

Number of Scans: 1024

Line Broadening: exp. 0.5 Hz

Rep.time: 1.85 s

Resolution: 1.1 Hz (TMS)

Instrument: Varian INOVA 500

Un Min

nuc δ [ppm]

a,a': 15.70, 15.80

b: 32.47

c: 51.45

d: 28.07

e: 54.14

f: 47.06

g: 12.03

J[Hz]

$J(a,P) = J(a',P) = 3.7$

$J(b,P) = 107.3$

$J(c,P) = 7.8$

$J(d,P) = 2.8$

$J(e,P) = 3.7$

