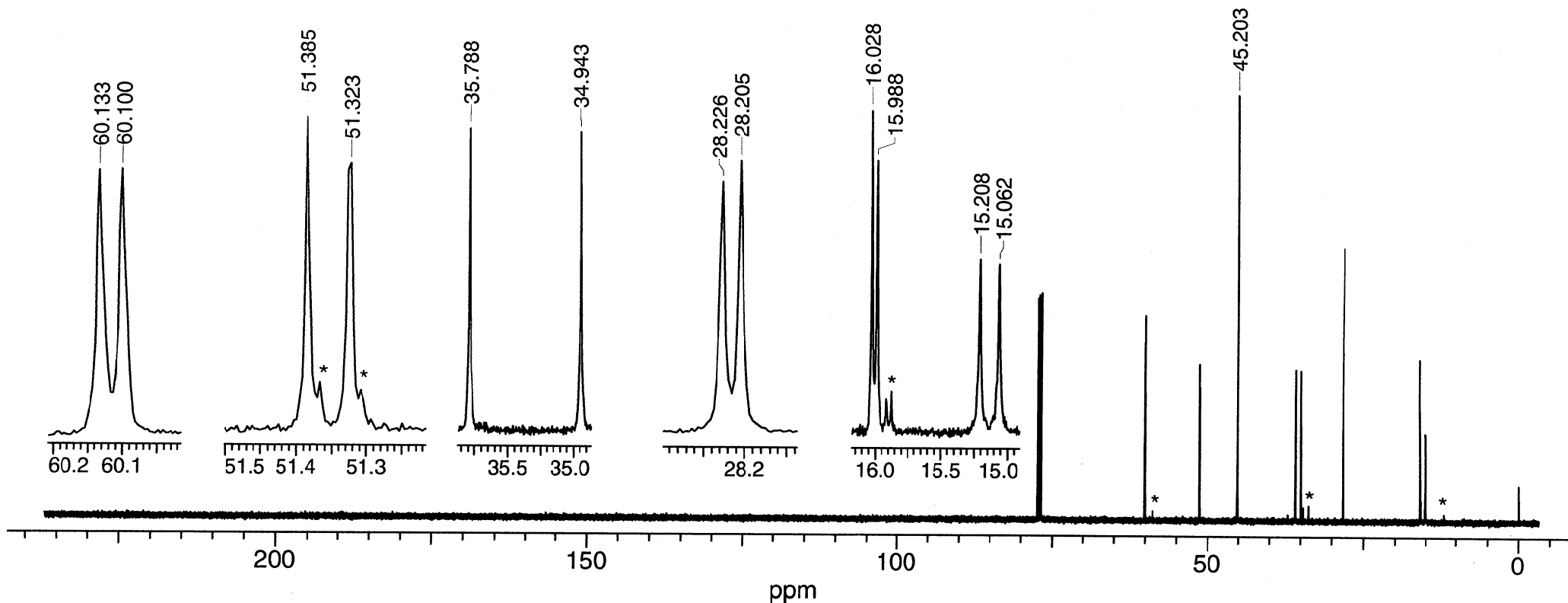


Methyl S-2-dimethylaminoethyl propylphosphonothiolate

$^{13}\text{C}\{^1\text{H}\}$  NMR

7-3-773



Res.freq: 125.697 MHz

Solvent:  $\text{CDCl}_3$

Temperature: 28°C

Concentration: 0.077  $\mu\text{l}/\mu\text{l}$

Reference: TMS [internal]

Spectral Width: 31298.9 Hz

Data points [Fid]: 115712

Data Points [Spectrum]: 256K

Pulse Width: 3.5  $\mu\text{s}$  [45°]

Number of Scans: 1024

Line Broadening: exp. 0.5 Hz

Rep.time: 1.85 s

Resolution: 1.2 Hz (TMS)

Instrument: Varian INOVA 500

*Um Mein*

nuc  $\delta$ [ppm]

a: 51.35

b: 15.14

c: 16.01

d: 35.37

e: 28.22

f: 60.12

g: 45.20

J[Hz]

J(a,P) = 7.8

J(b,P) = 5.1

J(c,P) = 18.4

J(d,P) = 106.2

J(e,P) = 2.8

J(f,P) = 4.1

