

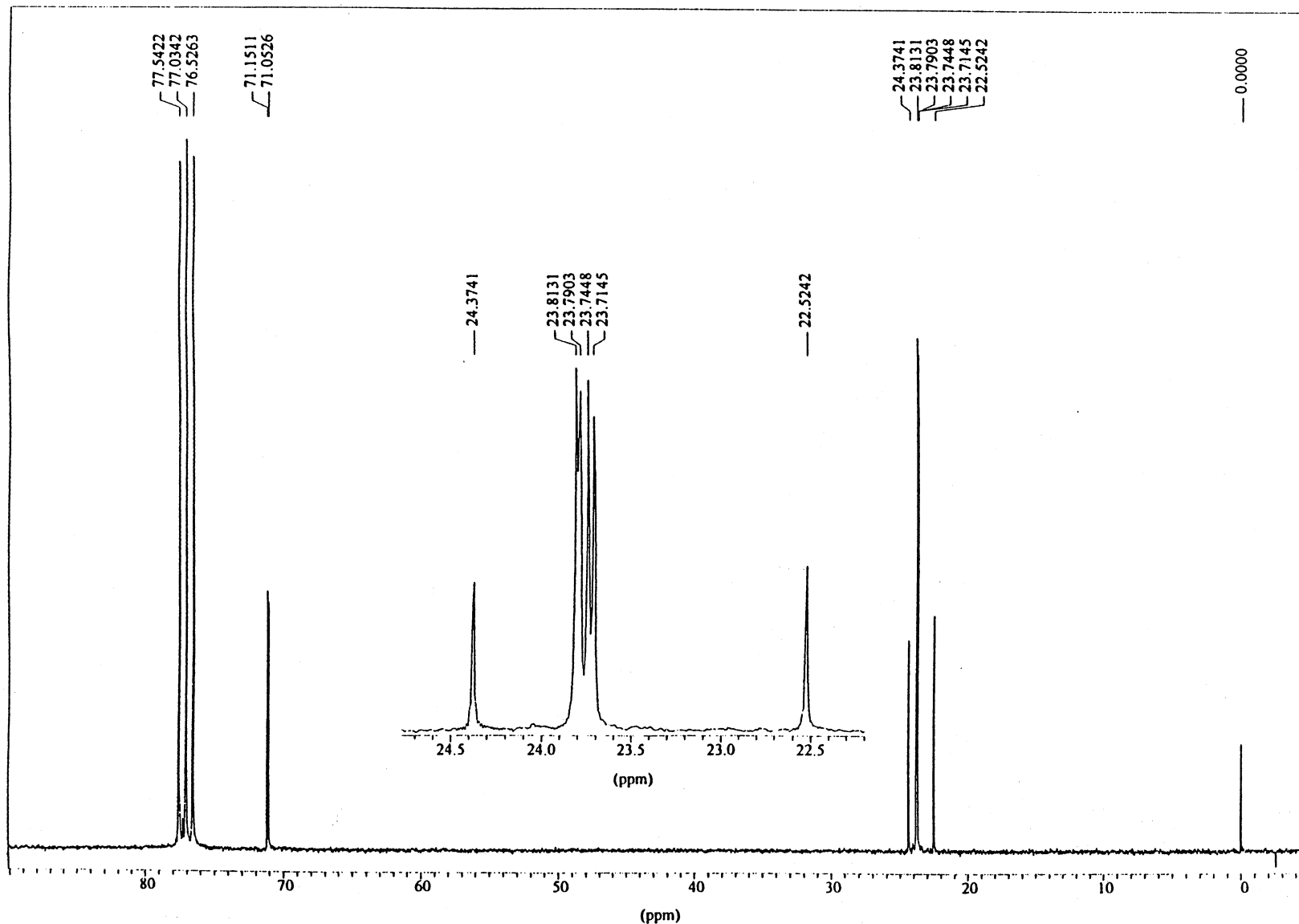
DIISOPROPYL METHYLTHIOPHOSPHONATE

CAS RN 66295-45-2

14-3-5

Instrument: Bruker AC-250
Nucleus: $^{13}\text{C}\{^1\text{H}\}$
Frequency: 62.89 Hz

Solvent: CDCl_3
Concentration: 19 mg/ml
Temperature: 23°C
Reference: TMS (int.)
Spectral width: 15 625 Hz
Pulse width: 2.3 μs (45°)
Repetition time: 2.1 s
Data points
FID/Spectrum: 32 K/32 K
Scans: 30 000
Line broadening: 0.5 Hz (exp.)
Resolution: 1.0 Hz (FMS)



Assignments

a, a': $\delta = 23.75(\text{d}); J = 4.8 \text{ Hz}$
 $\delta = 23.78(\text{d}); J = 4.2 \text{ Hz}$
b: $\delta = 23.45(\text{d}); J = 116.4 \text{ Hz}$
c: $\delta = 71.10(\text{d}); J = 6.2 \text{ Hz}$

