

METHYL PINACOLYL METHYLTHIOPHOSPHONATE

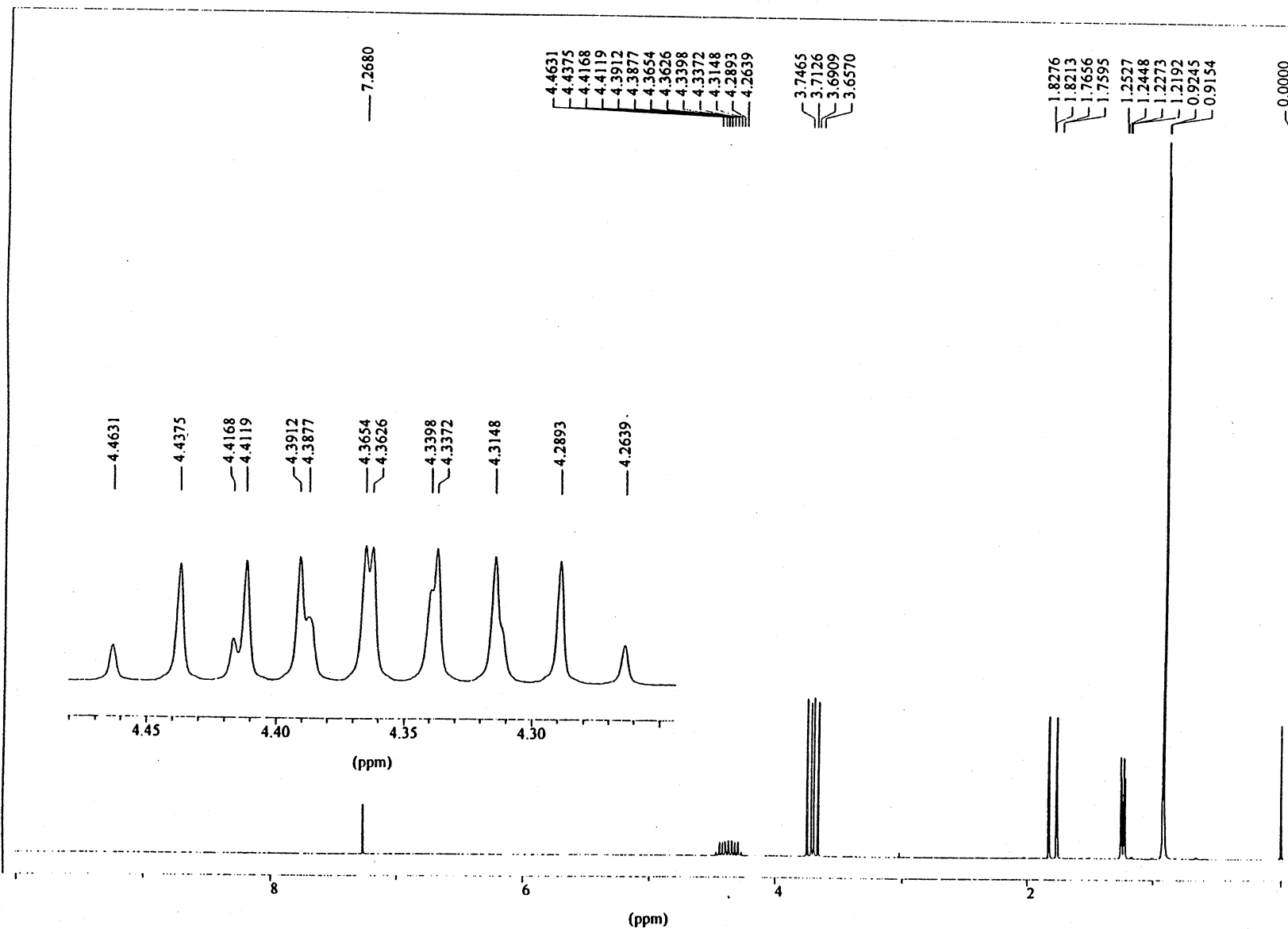
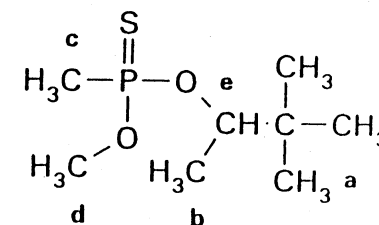
14-3-7

Instrument: Bruker AC-250
Nucleus: ^1H
Frequency: 250.13 Hz

Solvent: CDCl_3
Concentration: 22 mg/ml
Temperature: 23°C
Reference: TMS (int.)
Spectral width: 2873.6 Hz
Pulse width: 4.7 μs (45°)
Repetition time: 12.4 s
Data points
FID/Spectrum: 64 K/64 K
Scans: 64
Line broadening: 0.05 Hz (exp.)
Resolution: 0.5 Hz (TMS)

Assignments

- a: $\delta = 0.91(\text{s}), 0.91(\text{s})$ (diaster.)
b: $\delta = 1.23(\text{d}), 1.24(\text{d})$ (diaster.);
 $J_{\text{b,e}} = 6.4$ Hz
c: $\delta = 1.79(\text{d}), 1.80(\text{d})$ (diaster.);
 $J_{\text{c,p}} = 15.5$ Hz
d: $\delta = 3.68(\text{d}), 3.72(\text{d})$ (diaster.);
 $J_{\text{d,p}} = 13.9$ Hz
e: $\delta = 4.33(\text{dq})$;
 $J_{\text{e,p}} = 12.0$ Hz, $J_{\text{e,b}} = 6.4$ Hz
 $\delta = 4.40(\text{dq})$ (diaster.);
 $J_{\text{e,p}} = 11.6$ Hz, $J_{\text{e,b}} = 6.4$ Hz



OPCW Code: 14-3-7 (p1/1)