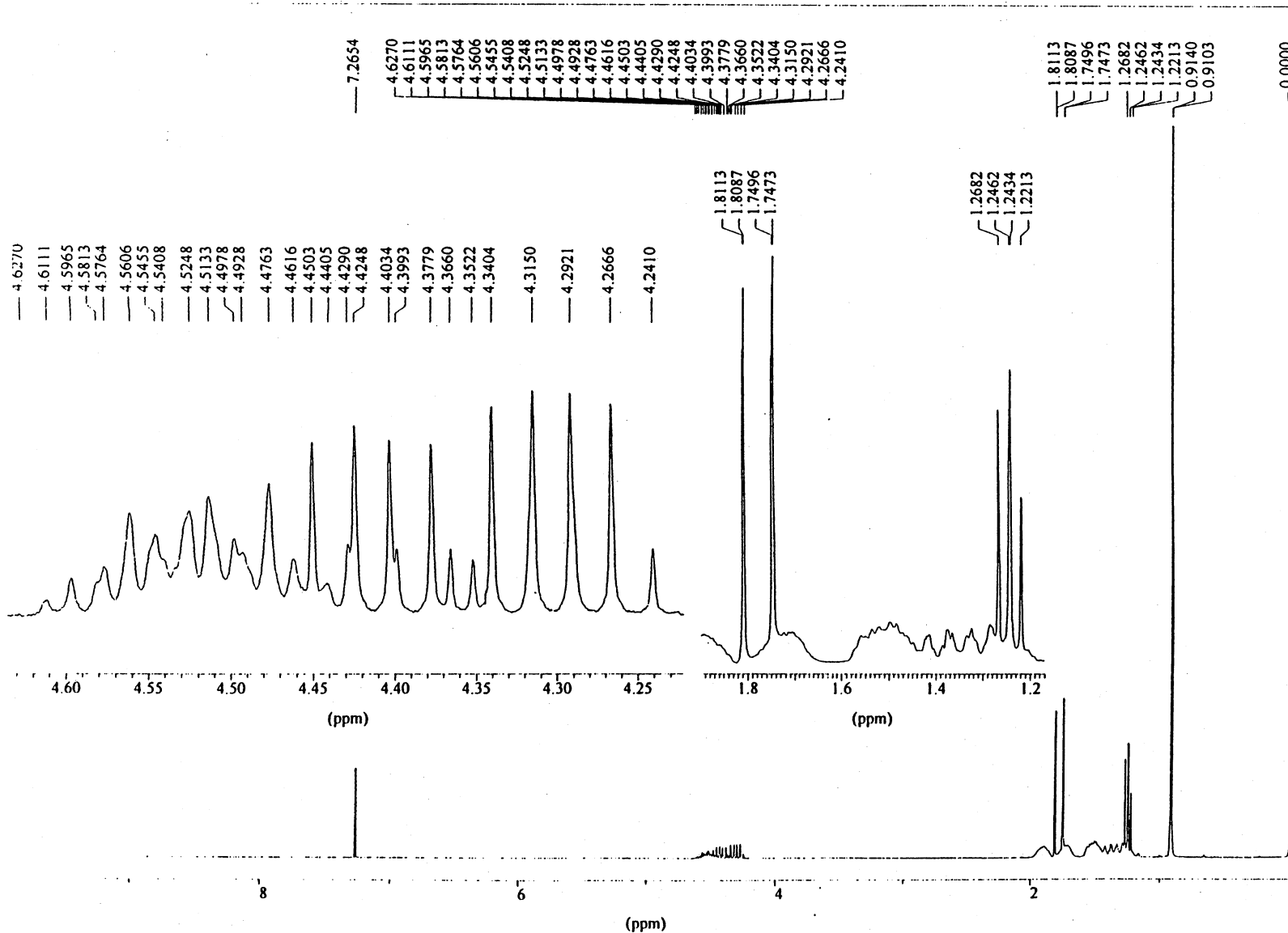


CYCLOHEXYL PINACOLYL METHYLTHIOPHOSPHONATE

14-3-13

Instrument: Bruker AC-250
Nucleus: ¹H
Frequency: 250.13 Hz

Solvent: CDCl₃
Concentration: 17 mg/ml
Temperature: 23°C
Reference: TMS (int.)
Spectral width: 2873.6 Hz
Pulse width: 4.7 μs (45°)
Repetition time: 12.4 s
Data points
FID/Spectrum: 64 K/64 K
Scans: 64
Line broadening: 0.05 Hz (exp.)
Resolution: 0.5 Hz (TMS)



Assignments

- a: $\delta = 0.910, 0.914$
- b: $\delta = 1.23(d); J_{b-g} = 6.2 \text{ Hz},$
 $\delta = 1.26(d); J_{b-g} = 6.2 \text{ Hz}$
- c,d,e: $\delta = 1.2 - 2.0$
- f: $\delta = 1.778(d); J_{f-p} = 15.3 \text{ Hz},$
 $\delta = 1.780(d); J_{f-p} = 15.4 \text{ Hz}$
- g: $\delta = 4.30(dq); J_{g-p} = 12.1 \text{ Hz},$
 $J_{g-b} = 6.4 \text{ Hz},$
 $\delta = 4.41(dq); J_{g-p} = 11.7 \text{ Hz},$
 $J_{g-b} = 6.4 \text{ Hz}$
- h: $\delta = 4.54(dtt); J_{h-p} = 11.9 \text{ Hz},$
 $J_{h-e} (\text{trans}) = 8.9 \text{ Hz},$
 $J_{h-e} (\text{cis}) = 3.9 \text{ Hz}$

