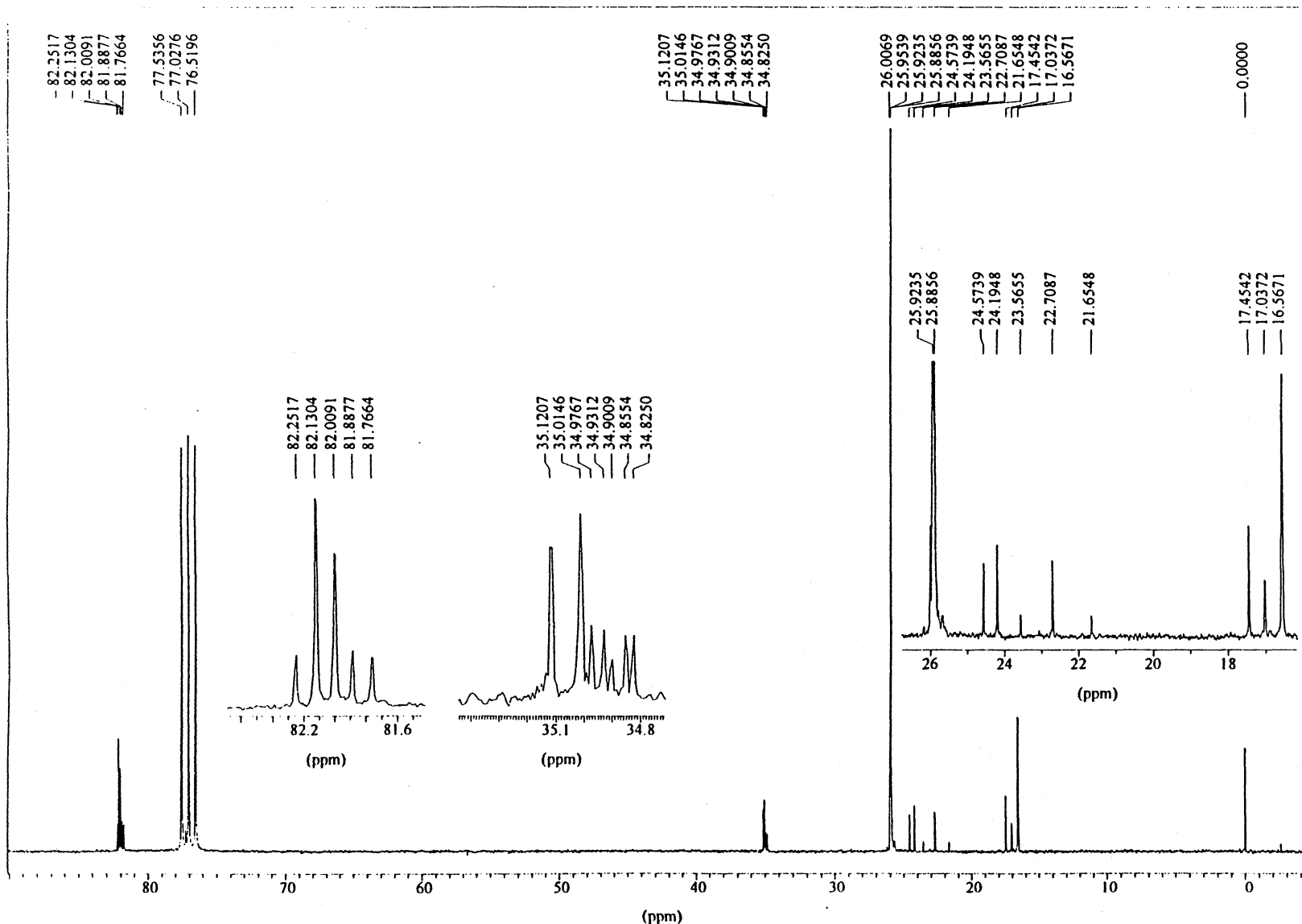


DIPINACOLYL METHYLTHIOPHOSPHONATE

14-3-20

Instrument: Bruker AC-250
 Nucleus: $^{13}\text{C}\{^1\text{H}\}$
 Frequency: 62.89 Hz

Solvent: CDCl_3
 Concentration: 16 mg/ml
 Temperature: 23°C
 Reference: TMS (int.)
 Spectral width: 15 625 Hz
 Pulse width: 2.3 μs (45°)
 Repetition time: 2.1 s
 Data points
 FID/Spectrum: 32 K/32 K
 Scans: 30 000
 Line broadening: 0.5 Hz (exp.)
 Resolution: 0.8 Hz (TMS)



Assignments

- a: $\delta = 25.89, 25.92, 25.95$
- b: $\delta = 16.57, 17.04, 17.45$
- c: $\delta = 22.61(\text{d}); J = 120.2 \text{ Hz}$,
 $\delta = 23.64(\text{d}); J = 117.3 \text{ Hz}$,
 $\delta = 25.10(\text{d}); J = 114.0 \text{ Hz}$
- d: $\delta = 81.83(\text{d}); J = 7.6 \text{ Hz}$,
 $\delta = 82.07(\text{d}); J = 7.6 \text{ Hz}$,
 $\delta = 82.19(\text{d}); J = 7.6 \text{ Hz}$
- e: $\delta = 35.07(\text{d}); J = 6.7 \text{ Hz}$,
 $\delta = 34.83 - 34.98$ (five peaks)

