

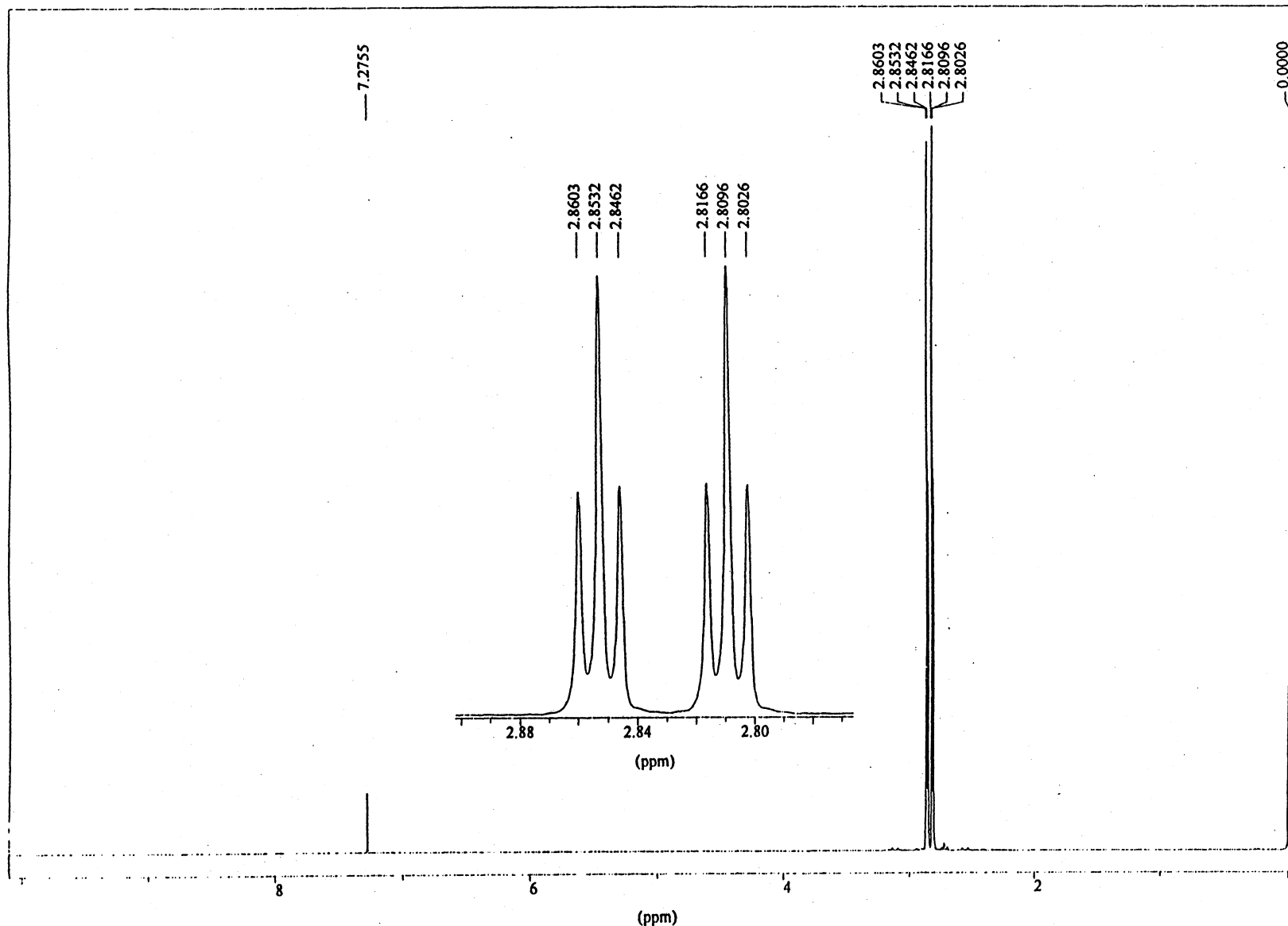
**N,N-DIMETHYLPHOSPHORAMIDIC DIFLUORIDE**

**14-3-0040**

**CAS RN 354-43-8**

**Instrument:** Bruker AC-250  
**Nucleus:** <sup>1</sup>H  
**Frequency:** 250.13 Hz

**Solvent:** CDCl<sub>3</sub>  
**Concentration:** 20 mg/ml  
**Temperature:** 23°C  
**Reference:** TMS (int.)  
**Spectral width:** 2873.6 Hz  
**Pulse width:** 4.7 μs (45°)  
**Repetition time:** 12.4 s  
**Data points**  
    **FID/Spectrum:** 64 K/64 K  
**Scans:** 64  
**Line broadening:** 0.05 Hz (exp.)  
**Resolution:** 0.5 Hz (TMS)



**Assignments**

$\delta_H = 2.83$ (dt);  
 $J_{H-P} = 10.9$  Hz,  
 $J_{H-F} = 1.8$  Hz

