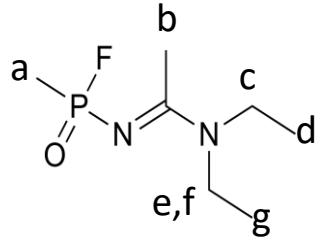


³¹P{¹H} NMR

N-(1-(Diethylamino)ethylidene)-P-methylphosphonamidic fluoride

23-3-0006

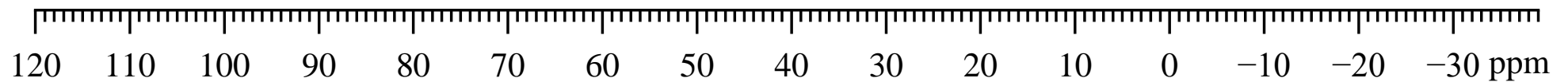
[2387496-12-8]



1.A.13

34.2756
30.2121

**



Solvent: CDCl₃
Concentration: 500 µg/mL
Reference Substance: ext. H₃PO₄
Sample Temperature: 303 K
Resonance Frequency: 242.91 MHz
Spectral width: 53571.429 Hz
Data Points (FID, spec): 64 k, 128 k

Flip angle, Pulse Width: 90°, 9.00 µs
No. Scans; Rep. time: 103, 5.0 s
Weighting; Line broad.: exp, 1.5 Hz
Spectral Resolution: 3.13 Hz (P)
Instrument: Bruker Avance III 600

nuc.	δ [ppm]	J [Hz]
P	32.2439	987.06 (F)