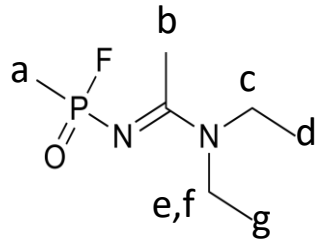


<sup>19</sup>F{<sup>1</sup>H} NMR

# N-(1-(Diethylamino)ethylidene)-P-methylphosphonamidic fluoride

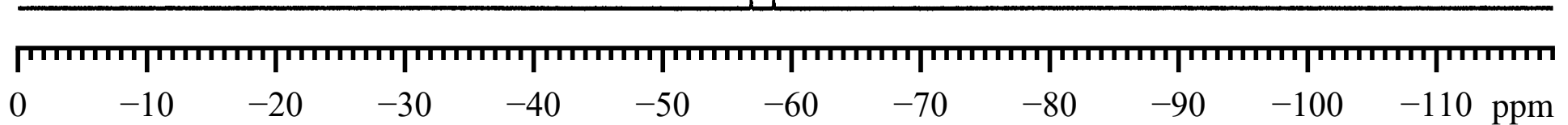
23-3-0008

[2387496-12-8]



1.A.13

-56.8523  
-58.6003



Solvent:	CDCl <sub>3</sub>	Flip angle, Pulse Width:	90°, 14.00 μs	nuc.	δ [ppm]	J [Hz]
Concentration:	500 μg/mL	No. Scans; Rep. time:	32, 10.0 s	F	-57.7263	986.97 (P)
Reference Substance:	ext. CFC <sub>3</sub>	Weighting; Line broad.:	exp, 0.3 Hz			
Sample Temperature:	303 K	Spectral Resolution:	4.96 Hz (F)			
Resonance Frequency:	564.63 MHz	Instrument:	Bruker Avance III 600			
Spectral width:	147058.824 Hz					
Data Points (FID, spec):	128 k, 256 k					